

# Nakamura-Tome

## Supermill

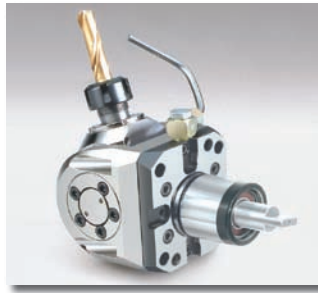
# DRIVEN AND STATIC TOOLING CATALOG



10139 BERGIN RD.  
HOWELL, MI 48843  
PHONE : 877-91-TOOLS ( 810-632-4446 )  
FAX: 877-92-TOOLS ( 810-632-4467 )  
EMAIL: [info@mdtooling.com](mailto:info@mdtooling.com)  
WEBSITE: [www.mdtooling.com](http://www.mdtooling.com)

Pricing Effective March 2009  
Catalog Revised July 2009

# Live Tooling



## Live Tool Technology

M. T. Marchetti, a major live tool manufacture in northern Italy, is a leader in live tool technology. The formula is simple. Use only the best angular contact high-speed bearings available. Add to this exacting tolerances for all ground shafts, gears and bearing pocket features. Next, develop a sealed system that **will not** allow any contamination from chips or coolant.

Top this all off with a superior design and you end up with a live tool that is more rigid, faster and will last longer. **We back this up with a 2-Year factory warranty.**

## Our Live Tool Warranty

Our tooling will give years of service in the most demanding applications. The superior design and rugged construction has proven this over the last 12 years. The reliability of our tools allows us to provide a 2-year factory warranty.

MD TOOLING will repair any defective tool holders for a period of 2 years from the date of purchase.

## Product Range

We have the largest range of live tooling available for most major machine tool manufactures.

Our available products include an extensive line of standard live tooling as well as specialty toolholders such as 0-90 and 0-180 adjustable angle tool holders, gear hobbers, and even worm gear generators. Our product range includes geared up holders to 60,000 RPM and are engineered for 1,000 PSI coolant through.

We are an industry leader in providing complete tooling solutions with hundreds of static tool options as well.

## Technical Support

Here at MD Tooling we have a full technical support department with over 25 years of CNC experience.

Our highly qualified staff can help with part processing, tooling up a job from a blue print and even assist with part programming. Applications Engineers are always available by phone to answer any questions you may have about our tooling or any other CNC related issue.

## Stock and Replenishment

MD Tooling maintains an extensive inventory of tooling in our warehouse in Michigan. Our current "fill" rate on orders is 93% from our stock in Michigan for same day shipping.

Should you require a non-stock item, our manufacturer, M.T. Marchetti also maintains a large inventory in Italy. Tooling can be obtained in as little as 3-5 business days.

## Shipping

MD Tooling realizes that when you need tooling, often you can't wait until the next day. We process orders and ship from available stock right up until 5PM EST to make certain we get your tooling solutions to you as quickly as possible.

We regularly ship throughout the day via DHL, UPS, FedEx or any other carrier that a customer requests.



10139 Bergin Road

Howell, MI 48843

**Phone:** 810 632-4446

**Fax:** 810 632-4467

**Email:** [info@mdtooling.com](mailto:info@mdtooling.com)

**Web:** [www.mdtooling.com](http://www.mdtooling.com)

- 2-Year Warranty on all live tools.
- Quality tooling at highly competitive pricing.
- Extensive inventory. We currently ship over 93% of all orders same day.
- Fast, Friendly, Reliable Service!
- More specialty tool holders than any other manufacturer.
- Custom tool holders available.
- All available tooling may not be shown in this catalog. If you can't find the holder you're looking for, please contact this office for assistance.



# Table of Contents

## Categorized Listing

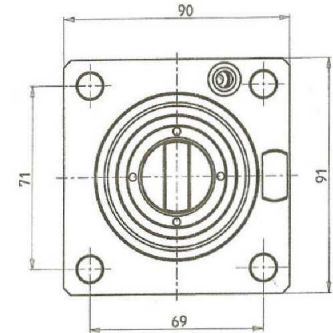
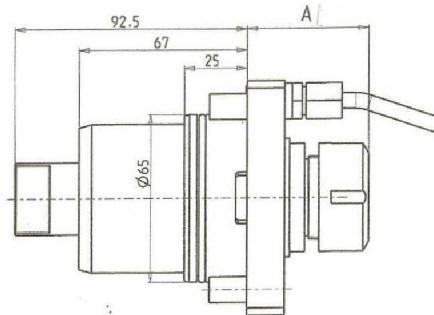
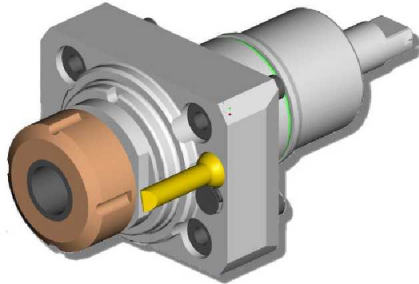
<b>SUPERMILL</b>	<b>1</b>
<b>DRIVEN</b>	<b>1</b>
RADIAL DRIVEN TOOL	1
AXIAL DRIVEN TOOL	1
AXIAL DRIVEN TOOL WITH 65mm INTERAXIS	2
OPPOSITE FACE AXIAL DRIVEN TOOL WITH 65mm INTERAXIS	2
0-180 ADJUSTABLE ANGLE DRIVEN TOOL	3
GEAR HOBBER DRIVEN TOOL	3
<b>STATIC</b>	<b>4</b>
SINGLE RADIAL STATIC TOOL	4
RADIAL SINGLE-SIDE TWIN STATIC TOOL H=70mm	4
DOUBLE RADIAL STATIC TOOL	5
MULTIPLE RADIAL STATIC TOOL	5
RADIAL BLADE HOLDER STATIC TOOL	6
SINGLE AXIAL STATIC TOOL	6
SINGLE AXIAL BORING BAR HOLDER 75mm INTERAXIS	7
SINGLE AXIAL BORING BAR HOLDER 75mm INTERAXIS Style 2	7
AXIAL 2 POSITION BORING BAR HOLDER	8
AXIAL 3 POSITION BORING BAR HOLDER	8

---

# SUPERMILL

## DRIVEN

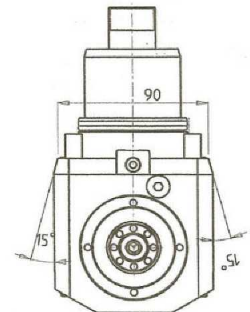
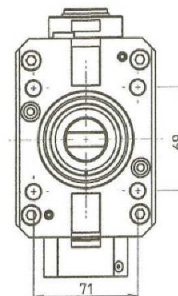
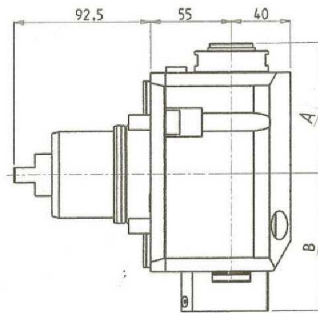
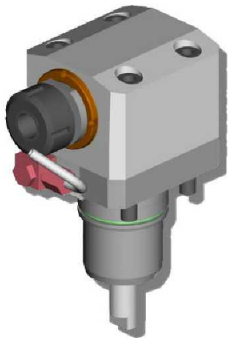
### RADIAL DRIVEN TOOL



PartNumber	Description	Spindle	I	RPM	Coolant Thru	Ext Coolant	A	A1	B	D	L
NKM0280125	ER25 Standard	ER25	1:1	6000		X	48.66		15		
NKM0280225	ER25A Coolant Through *	ER25A	1:1	6000	X	X	59.03		35		
NKM0280132	ER32 Standard	ER32	1:1	6000		X	52.16		15		
NKM0280232	ER32A Coolant Through *	ER32A	1:1	6000	X	X	67.53		35		
NKM0281617	Milling Head D=16mm, L=17mm	16x17	1:1	6000		X		25	15	16	17
NKM0282219	Milling Head D=22mm, L=19mm	22x19	1:1	6000		X		27	15	22	19
NKM0282721	Milling Head D=27mm, L=21mm	27x21	1:1	6000		X		28	15	27	21
NKM0281919	Milling Head D=3/4", L=3/4"	3/4" x 3/4"	1:1	6000		X		25	15	3/4"	3/4"
NKM0282519	Milling Head D=1", L=19mm	1" x 19	1:1	6000		X		29	15	1	19

\* Coolant Through tools are designed for 1000 psi.  
They require 5 Micron Filtration and **CANNOT** be run dry.

### AXIAL DRIVEN TOOL



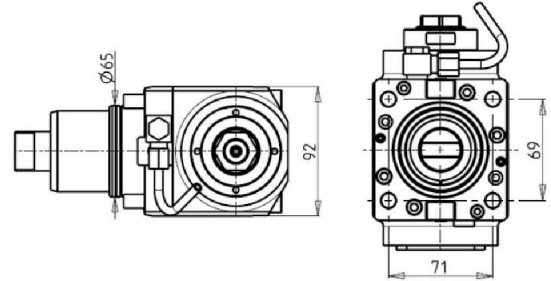
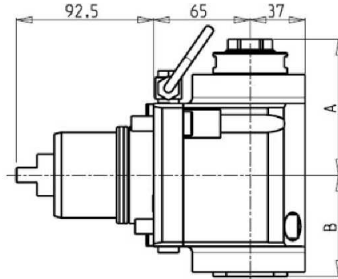
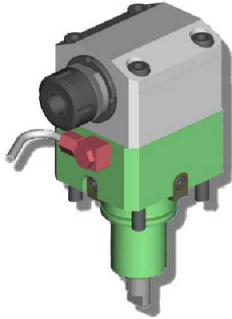
PartNumber	Description	Spindle	I	RPM	Coolant Thru	Ext Coolant	A	B
NKM0290125	ER25A Standard	ER25A	1:1	6000		X	91.03	68
NKM0290225	ER25A Coolant Through *	ER25A	1:1	6000	X	X	91.03	91.5
NKM0290132	ER32A Standard	ER32A	1:1	6000		X	94.53	68
NKM0290232	ER32A Coolant Through *	ER32A	1:1	6000	X	X	94.53	91.5

\* Coolant Through tools are designed for 1000 psi.  
They require 5 Micron Filtration and **CANNOT** be run dry.

# SUPERMILL

## DRIVEN

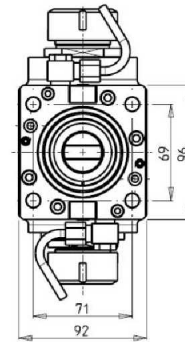
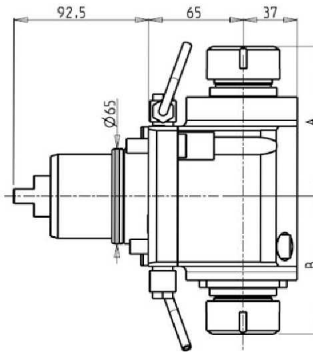
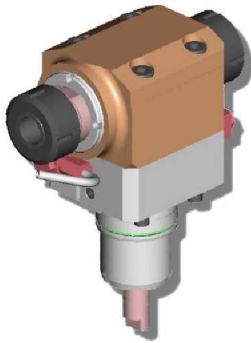
### AXIAL DRIVEN TOOL WITH 65mm INTERAXIS



PartNumber	Description	Spindle	I	RPM	Coolant Thru	Ext Coolant	A	B
NKM0610125	ER25A Standard	ER25A	1:1	6000		X	91.03	68
NKM0610225	ER25A Coolant Through *	ER25A	1:1	6000	X		91.03	91.5
NKM0610132	ER32A Standard	ER32A	1:1	6000		X	94.53	68
NKM0610232	ER32A Coolant Through *	ER32A	1:1	6000	X		94.53	91.5

\* Coolant Through tools are designed for 1000 psi.  
They require 5 Micron Filtration and **CANNOT** be run dry.

### OPPOSITE FACE AXIAL DRIVEN TOOL WITH 65mm INTERAXIS

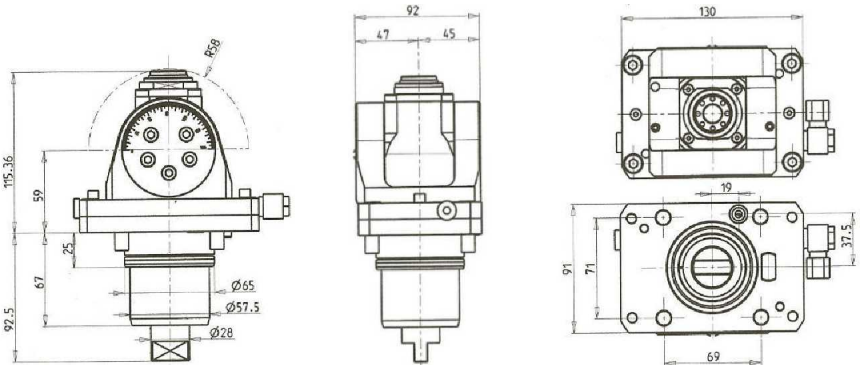
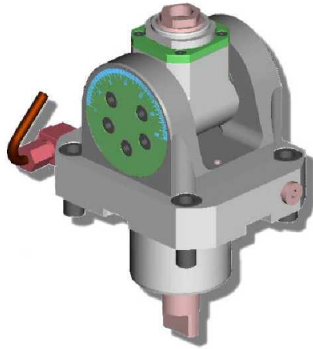


PartNumber	Description	Spindle	I	RPM	Reversible Main / Sub Spindle	Ext Coolant	A	B
NKM0600232	Opposite Face Axial 65mm Interaxis	ER32 + ER32	1:1	6000	X	X	102.66	94.26

# SUPERMILL

## DRIVEN

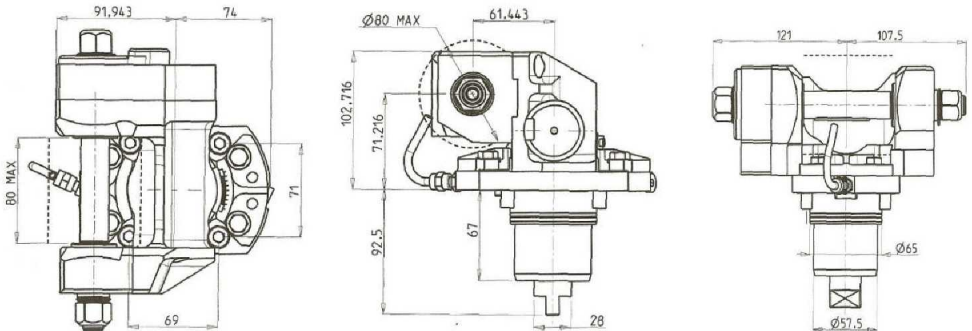
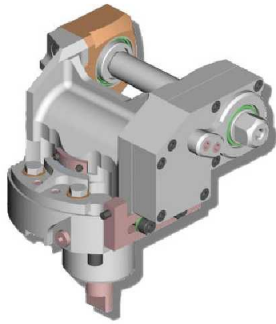
### 0-180 ADJUSTABLE ANGLE DRIVEN TOOL



PartNumber	Description	Spindle	I	RPM	Ext Coolant	D Max
NKM0340120	Adjustable Angle (0-180) ER20A	ER20A	1:1	6000	X	13

**Note :** Wrenches are provided with the purchase of Specialty Toolholders

### GEAR HOBBER DRIVEN TOOL



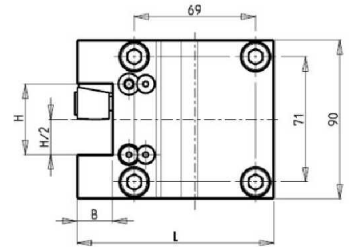
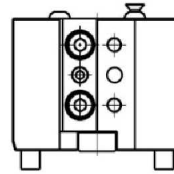
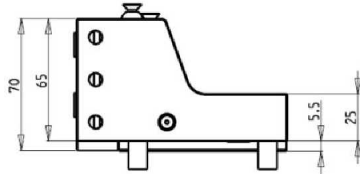
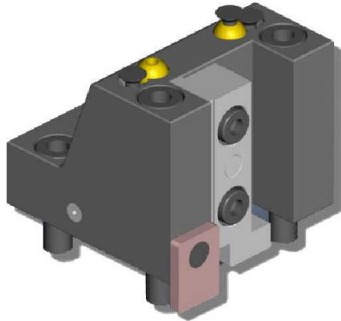
PartNumber	Description	I	RPM	Ext Coolant	D mm	D Inch
NKM0331100	Gear Hobbing Tool 1:1	1:1	6000	X	16-22-27-32	3/4" - 1" - 1.25"
NKM0332100	Gear Hobbing Tool 2:1, Geared Down	2:1	3000	X	16-22-27-32	3/4" - 1" - 1.25"

**Note :** Wrenches are provided with the purchase of Specialty Toolholders

# SUPERMILL

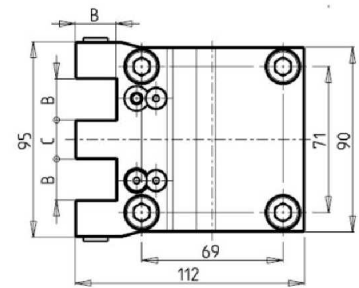
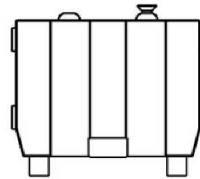
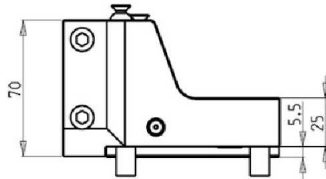
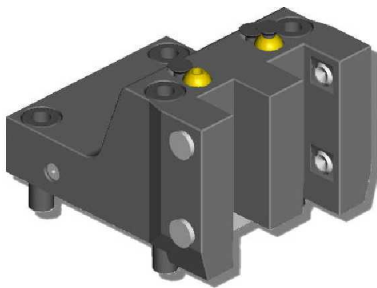
## STATIC

### SINGLE RADIAL STATIC TOOL



PartNumber	Description	Nakamura Reference	# of Tools	Reversible Main / Sub Spindle	Dimensions	L	B	H	H 2
NKM0412000	Radial Single Static Tool	G31510/G31520	1/2	X	mm	112	20	40	20
NKM0412500	Radial Single Static Tool	G31410/G31420	1/2	X	mm	117	25	50	25

### RADIAL SINGLE-SIDE TWIN STATIC TOOL H=70mm

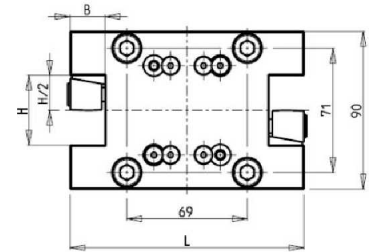
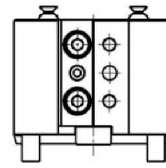
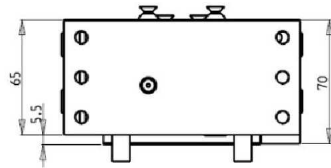
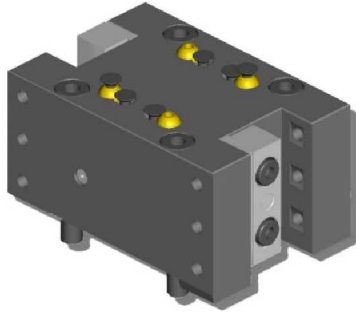


PartNumber	Description	# of Tools	Reversible Main / Sub Spindle	Dimensions	B	C
NKM0361905	Radial Single-Side Twin Static Tool 70mm	2	X	Inch	3/4"	19 (mm)
NKM0362000	Radial Single-Side Twin Static Tool 70mm	2	X	mm	20	19

# SUPERMILL

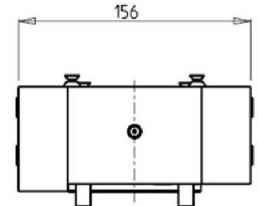
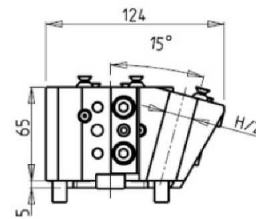
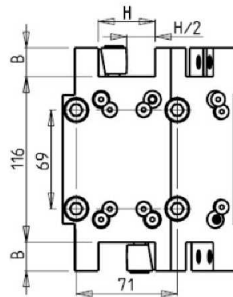
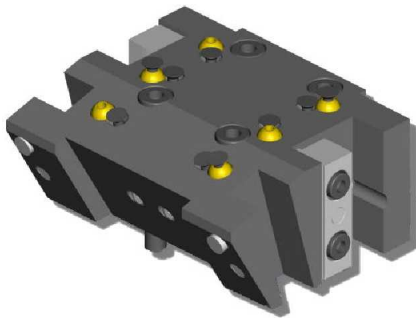
## STATIC

### DOUBLE RADIAL STATIC TOOL



PartNumber	Description	# of Tools	Reversible Main / Sub Spindle	Dimensions	L	B	H	H 2
NKM0422000	Double Radial Static Tool	2	X	mm	134	20	40	20
NKM0422500	Double Radial Static Tool	2	X	mm	144	25	50	25

### MULTIPLE RADIAL STATIC TOOL

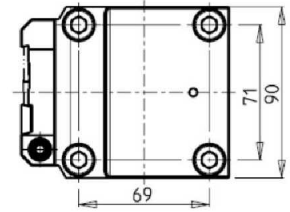
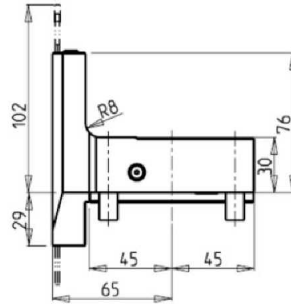
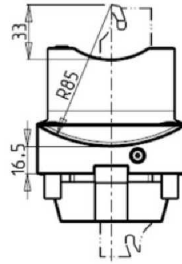
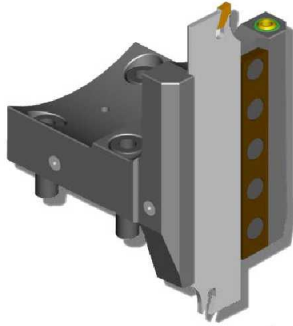


PartNumber	Description	Nakamura Reference	# of Tools	Reversible Main / Sub Spindle	Dimensions	H/2	B
NKM0381905	Multiple Radial Static Tool	G1417	4	X	Inch	3/4"	3/4"
NKM0382000	Multiple Radial Static Tool	G1416	4	X	mm	20	20

# SUPERMILL

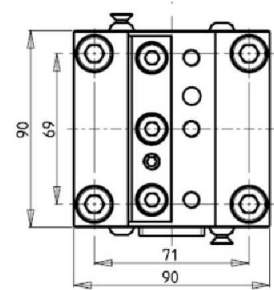
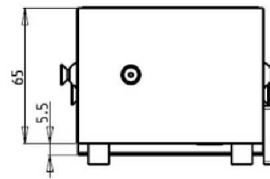
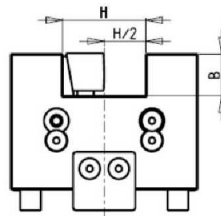
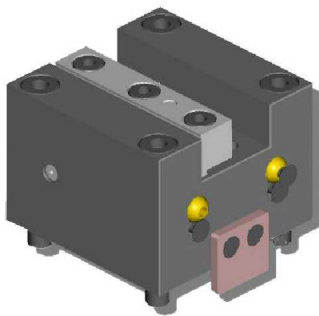
## STATIC

### RADIAL BLADE HOLDER STATIC TOOL



PartNumber	Description	# of Tools	Reversible Main / Sub Spindle
BLADEKIT	Blade Kit: 1 Blade and 10 Inserts	1	X
NKM0400132	Radial Blade Holder Tool	1	X

### SINGLE AXIAL STATIC TOOL

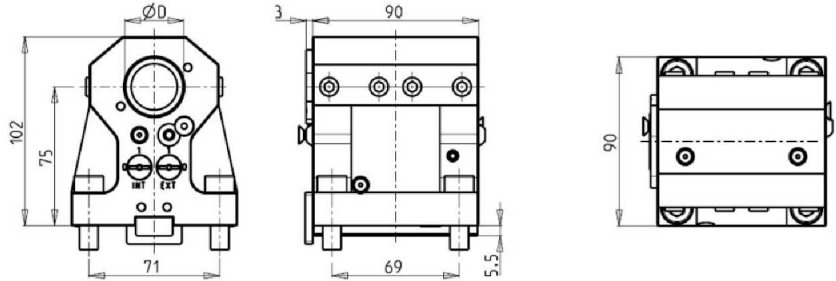


PartNumber	Description	# of Tools	Reversible Main / Sub Spindle	Dimensions	B	H	H 2
NKM0432000	Single Axial Static Tool	1	X	mm	20	40	20
NKM0432500	Single Axial Static Tool	1	X	mm	25	50	25

# SUPERMILL

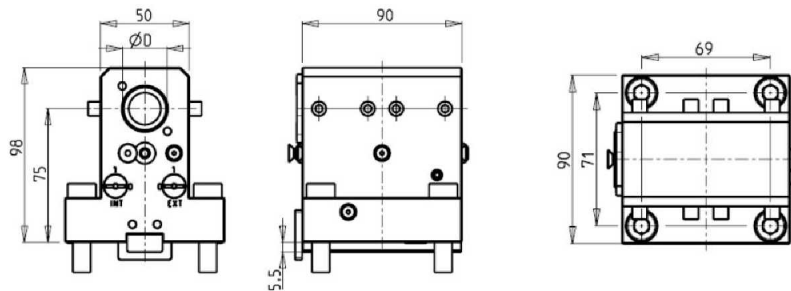
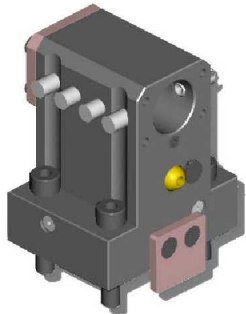
## STATIC

### SINGLE AXIAL BORING BAR HOLDER 75mm INTERAXIS



PartNumber	Description	# of Tools	Reversible Main / Sub Spindle	Coolant Thru	Ext Coolant	Dimensions	D
NKM0303200	Axial Single Boring Bar Holder 32mm I=75mm	1	X	OPTION	X	mm	32
NKM0304000	Axial Single Boring Bar Holder 40mm I=75mm	1	X	OPTION	X	mm	40
KIT1000001	32mm or 1 1/4" Plug to make BBH Coolant Through						
KIT1000018	40mm Plug to make BBH Coolant Through						

### SINGLE AXIAL BORING BAR HOLDER 75mm INTERAXIS Style 2

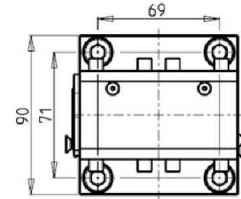
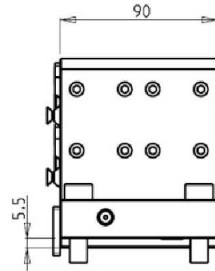
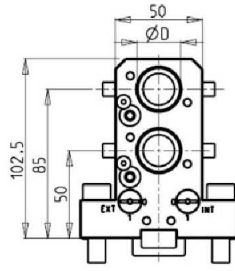
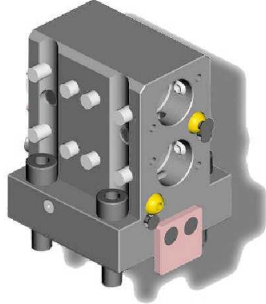


PartNumber	Description	Nakamura Reference	# of Tools	Reversible Main / Sub Spindle	Coolant Thru	Ext Coolant	Dimensions	D
NKM0302540	Axial Single Boring Bar Holder 1" I=75mm	G32417/G32411	1	X	OPTION	X	Inch	1"
NKM0302500	Axial Single Boring Bar Holder 25mm I=75mm	G32416/G32410	1	X	OPTION	X	mm	25
KIT1000006	25mm or 1" Plug to make BBH Coolant Through							

# SUPERMILL

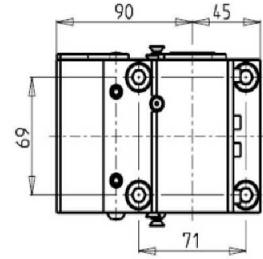
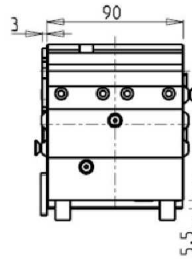
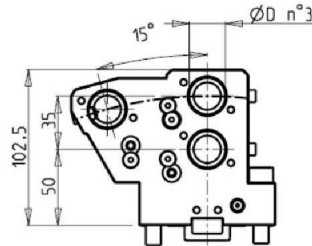
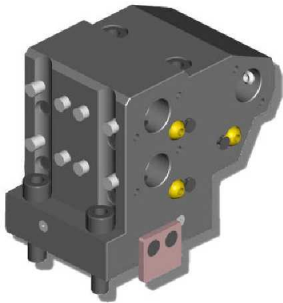
## STATIC

### AXIAL 2 POSITION BORING BAR HOLDER



PartNumber	Description	# of Tools	Reversible Main / Sub Spindle	Coolant Thru	Ext Coolant	Dimensions	D
NKM0442540	Axial 2 Position Boring Bar Holder D=1"	2	X	OPTION	X	Inch	1"
NKM0442500	Axial 2 Position Boring Bar Holder D=25mm	2	X	OPTION	X	mm	25
KIT1000006	25mm or 1" Plug to make BBH Coolant Through						

### AXIAL 3 POSITION BORING BAR HOLDER



PartNumber	Description	# of Tools	Reversible Main / Sub Spindle	Coolant Thru	Ext Coolant	Dimensions	D
NKM0392540	Axial 3 Position Boring Bar Holder D=1"	3	X	OPTION	X	Inch	1"
NKM0392500	Axial 3 Position Boring Bar Holder D=25mm	3	X	OPTION	X	mm	25
KIT1000006	25mm or 1" Plug to make BBH Coolant Through						

# Table of Contents

## Part Number Index

### B

BLADEKIT	Blade Kit: 1 Blade and 10 Inserts	6
----------	-----------------------------------	---

### K

KIT1000001	32mm or 1 1/4" Plug to make BBH Coolant Through	7
KIT1000006	25mm or 1" Plug to make BBH Coolant Through	8
KIT1000006	25mm or 1" Plug to make BBH Coolant Through	8
KIT1000006	25mm or 1" Plug to make BBH Coolant Through	7
KIT1000018	40mm Plug to make BBH Coolant Through	7

### N

NKM0280125	ER25 Standard	1
NKM0280132	ER32 Standard	1
NKM0280225	ER25A Coolant Through *	1
NKM0280232	ER32A Coolant Through *	1
NKM0281617	Milling Head D=16mm, L=17mm	1
NKM0281919	Milling Head D=3/4", L=3/4"	1
NKM0282219	Milling Head D=22mm, L=19mm	1
NKM0282519	Milling Head D=1", L=19mm	1
NKM0282721	Milling Head D=27mm, L=21mm	1
NKM0290125	ER25A Standard	1
NKM0290132	ER32A Standard	1
NKM0290225	ER25A Coolant Through *	1
NKM0290232	ER32A Coolant Through *	1
NKM0302500	Axial Single Boring Bar Holder 25mm l=75mm	7
NKM0302540	Axial Single Boring Bar Holder 1" l=75mm	7
NKM0303200	Axial Single Boring Bar Holder 32mm l=75mm	7
NKM0304000	Axial Single Boring Bar Holder 40mm l=75mm	7
NKM0331100	Gear Hobbing Tool 1:1	3
NKM0332100	Gear Hobbing Tool 2:1, Geared Down	3
NKM0340120	Adjustable Angle (0-180) ER20A	3
NKM0361905	Radial Single-Side Twin Static Tool 70mm	4
NKM0362000	Radial Single-Side Twin Static Tool 70mm	4
NKM0381905	Multiple Radial Static Tool	5
NKM0382000	Multiple Radial Static Tool	5
NKM0392500	Axial 3 Position Boring Bar Holder D=25mm	8
NKM0392540	Axial 3 Position Boring Bar Holder D=1"	8
NKM0400132	Radial Blade Holder Tool	6
NKM0412000	Radial Single Static Tool	4
NKM0412500	Radial Single Static Tool	4
NKM0422000	Double Radial Static Tool	5
NKM0422500	Double Radial Static Tool	5
NKM0432000	Single Axial Static Tool	6
NKM0432500	Single Axial Static Tool	6
NKM0442500	Axial 2 Position Boring Bar Holder D=25mm	8
NKM0442540	Axial 2 Position Boring Bar Holder D=1"	8
NKM0600232	Opposite Face Axial 65mm Interaxis	2
NKM0610125	ER25A Standard	2
NKM0610132	ER32A Standard	2
NKM0610225	ER25A Coolant Through *	2
NKM0610232	ER32A Coolant Through *	2