

DRIVEN TOOLING
For
Mazak Lathes
SQT 15-18 Lathes



10139 BERGIN RD.
HOWELL, MI 48843
PHONE : 877-91-TOOLS (810-632-4446)
FAX: 877-92-TOOLS (810-632-4467)
EMAIL: info@mdtooling.com
WEBSITE: www.mdtooling.com

June 2009

Live Tooling



Live Tool Technology

M. T. Marchetti, a major live tool manufacture in northern Italy, is a leader in live tool technology. The formula is simple. Use only the best angular contact high-speed bearings available. Add to this exacting tolerances for all ground shafts, gears and bearing pocket features. Next, develop a sealed system that **will not** allow any contamination from chips or coolant.

Top this all off with a superior design and you end up with a live tool that is more rigid, faster and will last longer. **We back this up with a 2-Year factory warranty.**

Our Live Tool Warranty

Our tooling will give years of service in the most demanding applications. The superior design and rugged construction has proven this over the last 12 years. The reliability of our tools allows us to provide a 2-year factory warranty.

MD TOOLING will repair any defective tool holders for a period of 2 years from the date of purchase.

Product Range

We have the largest range of live tooling available for most major machine tool manufactures.

Our available products include an extensive line of standard live tooling as well as specialty toolholders such as 0-90 and 0-180 adjustable angle tool holders, gear hobbers, and even worm gear generators. Our product range includes geared up holders to 60,000 RPM and are engineered for 1,000 PSI coolant through.

We are an industry leader in providing complete tooling solutions with hundreds of static tool options as well.

Technical Support

Here at MD Tooling we have a full technical support department with over 25 years of CNC experience.

Our highly qualified staff can help with part processing, tooling up a job from a blue print and even assist with part programming. Applications Engineers are always available by phone to answer any questions you may have about our tooling or any other CNC related issue.

Stock and Replenishment

MD Tooling maintains an extensive inventory of tooling in our warehouse in Michigan. Our current "fill" rate on orders is 93% from our stock in Michigan for same day shipping.

Should you require a non-stock item, our manufacturer, M.T. Marchetti also maintains a large inventory in Italy. Tooling can be obtained in as little as 3-5 business days.

Shipping

MD Tooling realizes that when you need tooling, often you can't wait until the next day. We process orders and ship from available stock right up until 5PM EST to make certain we get your tooling solutions to you as quickly as possible.

We regularly ship throughout the day via DHL, UPS, FedEx or any other carrier that a customer requests.



10139 Bergin Road

Howell, MI 48843

Phone: 810 632-4446

Fax: 810 632-4467

Email: info@mdtooling.com

Web: www.mdtooling.com

- 2-Year Warranty on all live tools.
- Quality tooling at highly competitive pricing.
- Extensive inventory. We currently ship over 93% of all orders same day.
- Fast, Friendly, Reliable Service!
- More specialty tool holders than any other manufacturer.
- Custom tool holders available.
- All available tooling may not be shown in this catalog. If you can't find the holder you're looking for, please contact this office for assistance.



Table of Contents

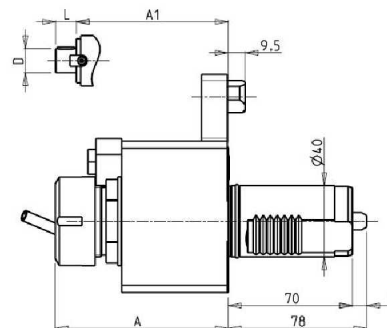
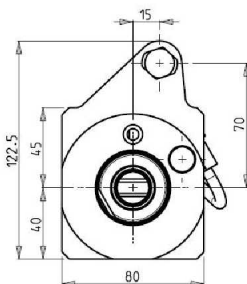
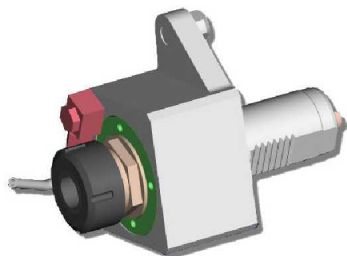
Categorized Listing

| | |
|--|----------|
| SQT 15-18 | 1 |
| DRIVEN | 1 |
| RADIAL DRIVEN TOOL | 1 |
| RADIAL RE-DIRECTED DRIVEN TOOL 50mm | 1 |
| GEARED UP RADIAL REDIRECTED TOOL 50mm | 2 |
| GEARED DOWN RADIAL REDIRECTED TOOL 50mm | 2 |
| AXIAL DRIVEN TOOL | 3 |
| AXIAL DRIVEN OPPOSITE FACE TOOL | 3 |
| 0-90 ADJUSTABLE ANGLE DRIVEN TOOL | 4 |
| 0-180 ADJUSTABLE ANGLE DRIVEN TOOL | 4 |
| STATIC | 5 |
| RADIAL SINGLE TOOL STATIC HOLDER | 5 |
| RADIAL SINGLE TOOL DOUBLE SIDED STATIC HOLDER | 5 |
| RADIAL DOUBLE BLADE HOLDER | 5 |
| AXIAL SINGLE TOOL STATIC HOLDER | 6 |
| AXIAL SINGLE BORING BAR HOLDER 130mm INTERAXIS | 6 |
| AXIAL SINGLE BORING BAR HOLDER 140mm INTERAXIS | 7 |

SQT 15-18

DRIVEN

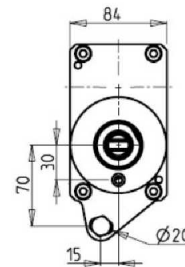
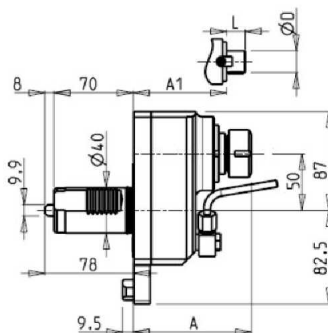
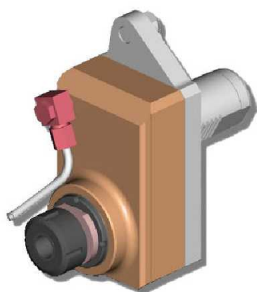
RADIAL DRIVEN TOOL



| PartNumber | Description | Spindle | I | RPM | Coolant Thru | Ext Coolant | A | A1 | D | L |
|------------|-----------------------------|---------|-----|------|--------------|-------------|--------|------|----|----|
| MZK0090232 | ER32 Standard | ER32 | 1:1 | 4500 | | X | 97.46 | | | |
| MZK0091232 | ER32 Coolant Through * | ER32 | 1:1 | 4500 | X | X | 110.46 | | | |
| MZK0090225 | ER25A Standard | ER25A | 1:1 | 4500 | | X | 83.33 | | | |
| MZK0092219 | Milling Head D=22mm, L=19mm | 22x19 | 1:1 | 4500 | | X | | 98.8 | 22 | 19 |

* Coolant Through tools are designed for 1000 psi.
They require 5 Micron Filtration and **CANNOT** be run dry.

RADIAL RE-DIRECTED DRIVEN TOOL 50mm

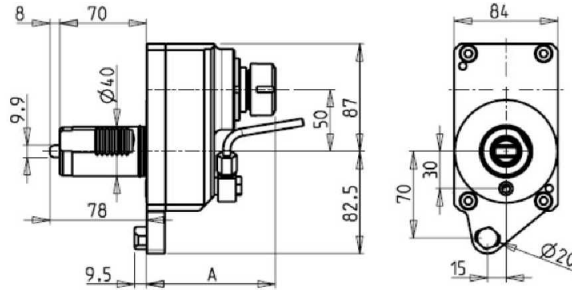
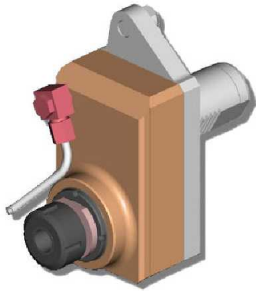


| PartNumber | Description | Spindle | I | RPM | Ext Coolant | A | A1 | D | L |
|------------|--|---------|-----|------|-------------|-------|----|----|----|
| MZK0010025 | ER25 Redirected | ER25 | 1:1 | 4500 | X | 104.5 | | | |
| MZK0010032 | ER32 Redirected | ER32 | 1:1 | 4500 | X | 118.1 | | | |
| MZK0010017 | Milling Head D=16mm, L=17mm Redirected | 16x17 | 1:1 | 4500 | X | | 86 | 16 | 17 |
| MZK0010019 | Milling Head D=22mm, L=19mm Redirected | 22x19 | 1:1 | 4500 | X | | 88 | 22 | 19 |
| MZK0010027 | Milling Head D=27mm, L=21mm Redirected | 27x21 | 1:1 | 4500 | X | | 90 | 27 | 21 |

SQT 15-18

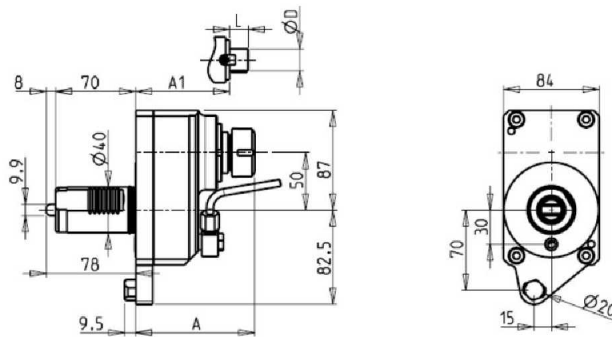
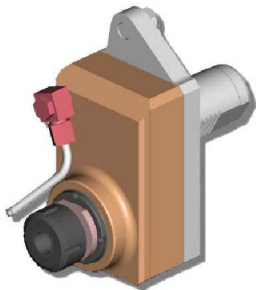
DRIVEN

GEARED UP RADIAL REDIRECTED TOOL 50mm



| PartNumber | Description | Spindle | I | RPM | Ext Coolant | A |
|------------|-------------------------------|---------|-----|------|-------------|-------|
| MZK0012125 | Geared Up 2:1 ER25 Redirected | ER25 | 1:2 | 9000 | X | 118.1 |

GEARED DOWN RADIAL REDIRECTED TOOL 50mm

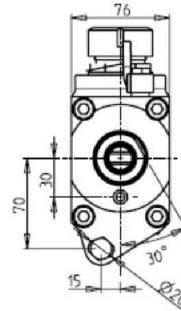
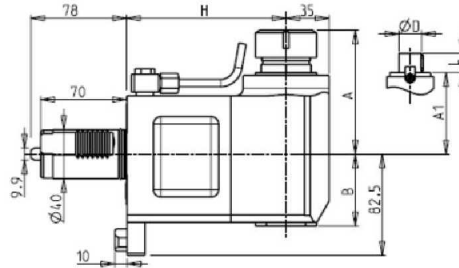
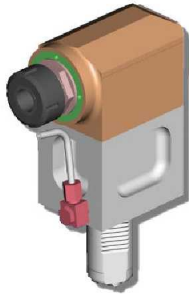


| PartNumber | Description | Spindle | I | RPM | Ext Coolant | A | A1 | D | L |
|------------|---|---------|-----|------|-------------|-------|----|----|----|
| MZK0011232 | Geared Down 1:2 ER32 Redirected | ER32 | 2:1 | 2250 | X | 118.1 | | | |
| MZK0011227 | Geared Down 1:2 Mill Head D=27mm, L=21mm Redirected | 27x21 | 2:1 | 2250 | X | | 90 | 27 | 21 |

SQT 15-18

DRIVEN

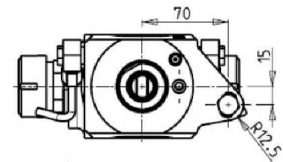
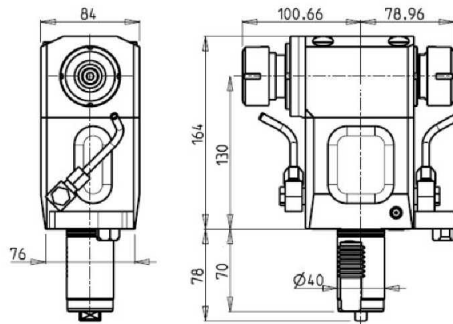
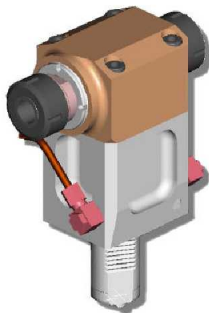
AXIAL DRIVEN TOOL



| PartNumber | Description | Spindle | I | RPM | Coolant Thru | Ext Coolant | A | A1 | B | D | H | L |
|------------|-----------------------------|---------|-----|------|--------------|-------------|-------|------|------|----|-----|----|
| MZK0020132 | ER32 Standard | ER32 | 1:1 | 4500 | | X | 101.1 | | 58.5 | | 130 | |
| MZK0021032 | ER32 Coolant Through * | ER32 | 1:1 | 4500 | X | X | 101.1 | | 82 | | 130 | |
| MZK0021132 | ER32 Standard H=80mm | ER32 | 1:1 | 4500 | | X | 101.1 | | 58.5 | | 80 | |
| MZK0020022 | Milling Head D=22mm, L=19mm | 22x19 | 1:1 | 4500 | | X | | 78.5 | 58.5 | 22 | 130 | 19 |
| MZK0020027 | Milling Head D=27mm, L=21mm | 27x21 | 1:1 | 4500 | | X | | 78.5 | 58.5 | 27 | 130 | 21 |

* Coolant Through tools are designed for 1000 psi.
They require 5 Micron Filtration and **CANNOT** be run dry.

AXIAL DRIVEN OPPOSITE FACE TOOL

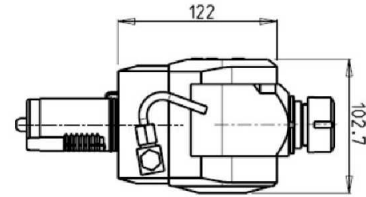
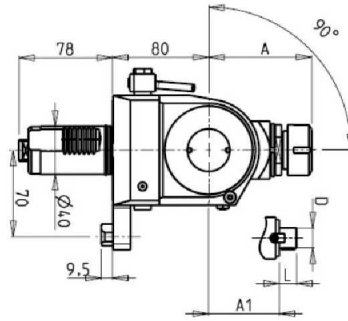
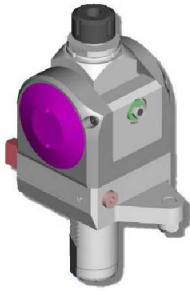


| PartNumber | Description | Spindle | I | RPM | Ext Coolant |
|------------|--------------------------------------|-------------|-----|------|-------------|
| MZK0160232 | Opposite Face Double Outer ER32/ER32 | ER32 + ER32 | 1:1 | 4500 | X |

SQT 15-18

DRIVEN

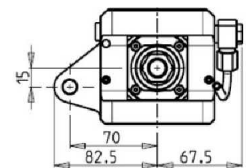
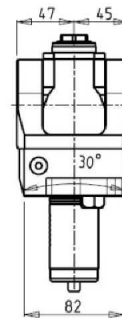
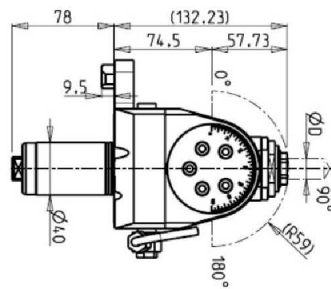
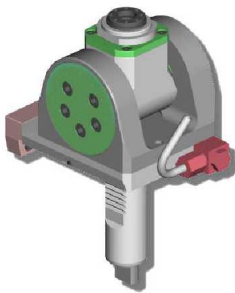
0-90 ADJUSTABLE ANGLE DRIVEN TOOL



| PartNumber | Description | Spindle | I | RPM | Ext Coolant | A | A1 | D | L |
|------------|--|---------|-----|------|-------------|-------|----|-----|-----|
| MZK0100020 | Adjustable Angle (0-90) ER20 | ER20 | 1:1 | 4500 | X | 84.16 | | | |
| MZK0100025 | Adjustable Angle (0-90) ER25 | ER25 | 1:1 | 4500 | X | 85.66 | | | |
| MZK0101617 | Adj. Angle (0-90) Milling Head D=16mm, L=17mm | 16x17 | 1:1 | 4500 | X | | 65 | 16 | 17 |
| MZK0102219 | Adj. Angle (0-90) Milling Head D=22mm, L=19mm | 22x19 | 1:1 | 4500 | X | | 66 | 22 | 19 |
| MZK0101905 | Adjustable Angle (0-90) Mill Head D=3/4, L=3/4 | 3/4x3/4 | 1:1 | 4500 | X | | 65 | 3/4 | 3/4 |

Note : Wrenches are provided with the purchase of Specialty Toolholders

0-180 ADJUSTABLE ANGLE DRIVEN TOOL



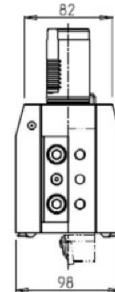
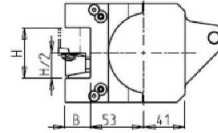
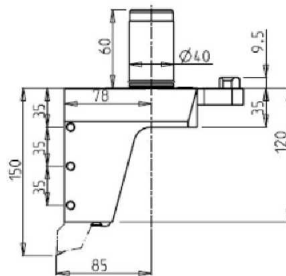
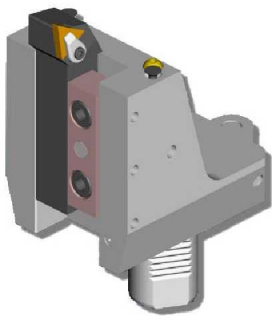
| PartNumber | Description | Spindle | I | RPM | Ext Coolant | D MAX |
|------------|--------------------------------|---------|-----|------|-------------|-------|
| MZK0110020 | Adjustable Angle (0-180) ER20A | ER20A | 1:1 | 4500 | X | 13 |

Note : Wrenches are provided with the purchase of Specialty Toolholders

SQT 15-18

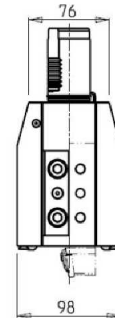
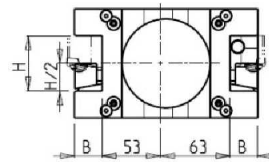
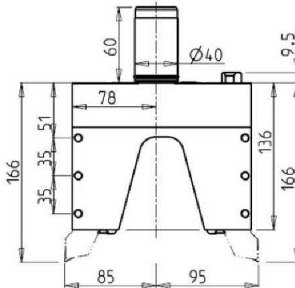
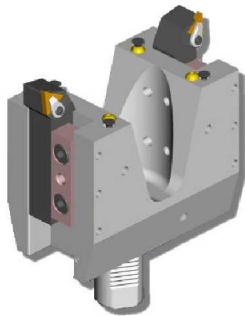
STATIC

RADIAL SINGLE TOOL STATIC HOLDER



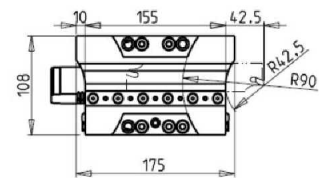
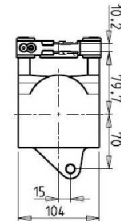
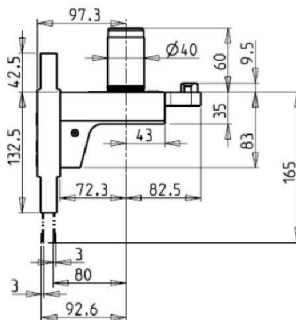
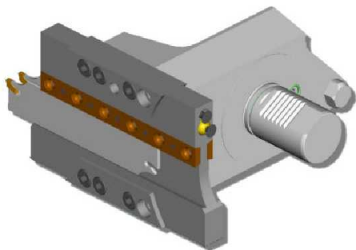
| PartNumber | Description | Number of Tools | Dimensions | B | H |
|------------|---------------------------|-----------------|------------|----|----|
| MZK0032540 | Radial Single Tool : 1" | 1/2 | Inch | 1" | 2" |
| MZK0032500 | Radial Single Tool : 25mm | 1/2 | mm | 25 | 50 |

RADIAL SINGLE TOOL DOUBLE SIDED STATIC HOLDER



| PartNumber | Description | Number of Tools | Dimensions | B | H |
|------------|---------------------------|-----------------|------------|----|----|
| MZK0042540 | Radial Double Tool : 1" | 2/4 | Inch | 1" | 2" |
| MZK0042500 | Radial Double Tool : 25mm | 2/4 | mm | 25 | 50 |

RADIAL DOUBLE BLADE HOLDER

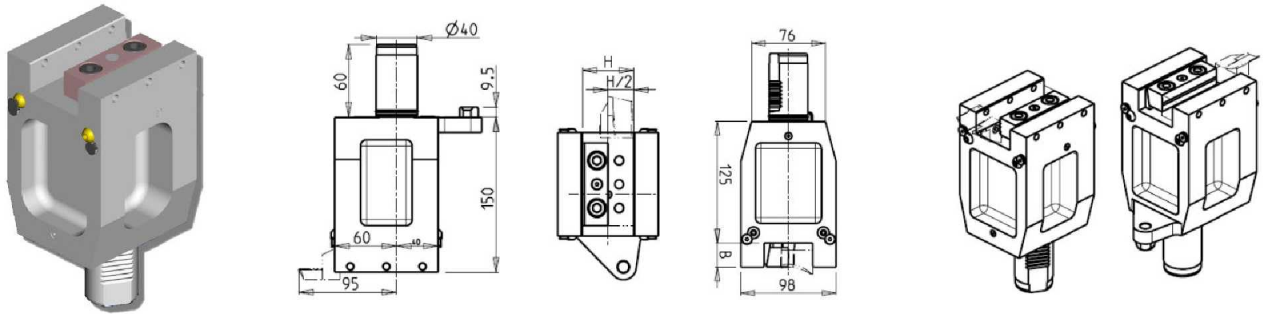


| PartNumber | Description | Number of Tools |
|------------|----------------------------|-----------------|
| MZK0060132 | Radial Double Blade Holder | 1 |

SQT 15-18

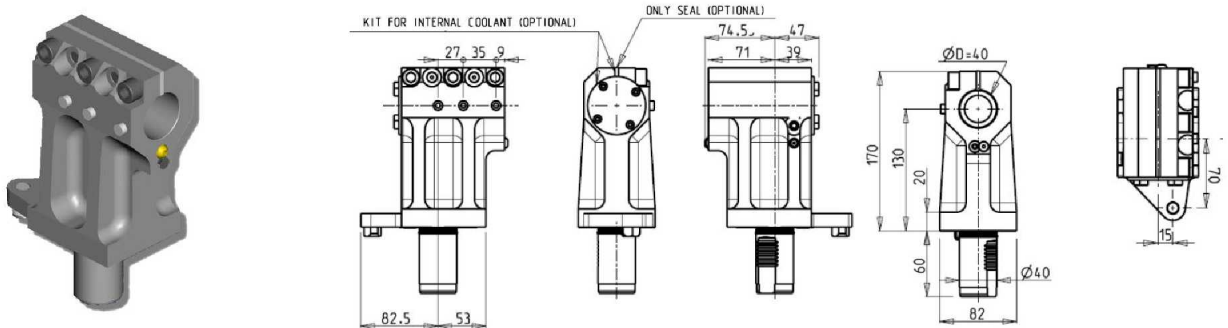
STATIC

AXIAL SINGLE TOOL STATIC HOLDER



| PartNumber | Description | Mazak Ref | Number of Tools | Dimensions | B | H |
|------------|-------------------------|-----------|-----------------|------------|----|----|
| MZK0052540 | Axial Single Tool: 1" | | 1/2 | Inch | 1" | 2" |
| MZK0052500 | Axial Single Tool: 25mm | T03005 | 1/2 | mm | 25 | 50 |

AXIAL SINGLE BORING BAR HOLDER 130mm INTERAXIS

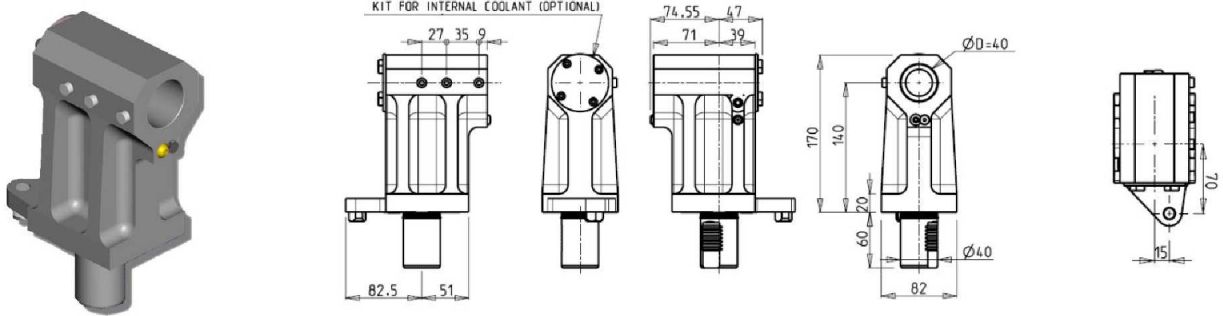


| PartNumber | Description | Number of Tools | Coolant Thru | Ext Coolant | Dimensions | D | H |
|------------|--|-----------------|--------------|-------------|------------|--------|-----|
| MZK0073810 | Axial Boring Bar Holder: 1 1/2" Centerline 130mm | 1 | OPTION | X | Inch | 1 1/2" | 130 |
| KIT1003004 | 1 1/2" Plug and Seal to Make BBH Coolant Through | | | | | | |
| MZK0074000 | Axial Boring Bar Holder: 40mm Centerline 130mm | 1 | OPTION | X | mm | 40 | 130 |
| KIT1003003 | 40mm Plug and Seal to Make BBH Coolant Through | | | | | | |

SQT 15-18

STATIC

AXIAL SINGLE BORING BAR HOLDER 140mm INTERAXIS



| PartNumber | Description | Number of Tools | Coolant Thru | Ext Coolant | Dimensions | D | H |
|------------|--|-----------------|--------------|-------------|------------|--------|-----|
| MZK0083810 | Axial Boring Bar Holder: 1 1/2" Centerline 140mm | 1 | OPTION | X | Inch | 1 1/2" | 140 |
| KIT1000004 | 1 1/2" Plug to Make BBH Coolant Through | | | | | | |
| MZK0084000 | Axial Boring Bar Holder: 40mm Centerline 140mm | 1 | OPTION | X | mm | 40 | 140 |
| KIT1000003 | 40mm Plug to Make BBH Coolant Through | | | | | | |

Table of Contents

Part Number Index

K

| | | |
|------------|--|---|
| KIT1000003 | 40mm Plug to Make BBH Coolant Through | 7 |
| KIT1000004 | 1 1/2" Plug to Make BBH Coolant Through | 7 |
| KIT1003003 | 40mm Plug and Seal to Make BBH Coolant Through | 6 |
| KIT1003004 | 1 1/2" Plug and Seal to Make BBH Coolant Through | 6 |

M

| | | |
|------------|---|---|
| MZK0010017 | Milling Head D=16mm, L=17mm Redirected | 1 |
| MZK0010019 | Milling Head D=22mm, L=19mm Redirected | 1 |
| MZK0010025 | ER25 Redirected | 1 |
| MZK0010027 | Milling Head D=27mm, L=21mm Redirected | 1 |
| MZK0010032 | ER32 Redirected | 1 |
| MZK0011227 | Geared Down 1:2 Mill Head D=27mm, L=21mm Redirected | 2 |
| MZK0011232 | Geared Down 1:2 ER32 Redirected | 2 |
| MZK0012125 | Geared Up 2:1 ER25 Redirected | 2 |
| MZK0020022 | Milling Head D=22mm, L=19mm | 3 |
| MZK0020027 | Milling Head D=27mm, L=21mm | 3 |
| MZK0020132 | ER32 Standard | 3 |
| MZK0021032 | ER32 Coolant Through * | 3 |
| MZK0021132 | ER32 Standard H=80mm | 3 |
| MZK0032500 | Radial Single Tool : 25mm | 5 |
| MZK0032540 | Radial Single Tool : 1" | 5 |
| MZK0042500 | Radial Double Tool: 25mm | 5 |
| MZK0042540 | Radial Double Tool: 1" | 5 |
| MZK0052500 | Axial Single Tool: 25mm | 6 |
| MZK0052540 | Axial Single Tool: 1" | 6 |
| MZK0060132 | Radial Double Blade Holder | 5 |
| MZK0073810 | Axial Boring Bar Holder: 1 1/2" Centerline 130mm | 6 |
| MZK0074000 | Axial Boring Bar Holder: 40mm Centerline 130mm | 6 |
| MZK0083810 | Axial Boring Bar Holder: 1 1/2" Centerline 140mm | 7 |
| MZK0084000 | Axial Boring Bar Holder: 40mm Centerline 140mm | 7 |
| MZK0090225 | ER25A Standard | 1 |
| MZK0090232 | ER32 Standard | 1 |
| MZK0091232 | ER32 Coolant Through * | 1 |
| MZK0092219 | Milling Head D=22mm, L=19mm | 1 |
| MZK0100020 | Adjustable Angle (0-90) ER20 | 4 |
| MZK0100025 | Adjustable Angle (0-90) ER25 | 4 |
| MZK0101617 | Adj. Angle (0-90) Milling Head D=16mm, L=17mm | 4 |
| MZK0101905 | Adjustable Angle (0-90) Mill Head D=3/4, L=3/4 | 4 |
| MZK0102219 | Adj. Angle (0-90) Milling Head D=22mm, L=19mm | 4 |
| MZK0110020 | Adjustable Angle (0-180) ER20A | 4 |
| MZK0160232 | Opposite Face Double Outler ER32/ER32 | 3 |