

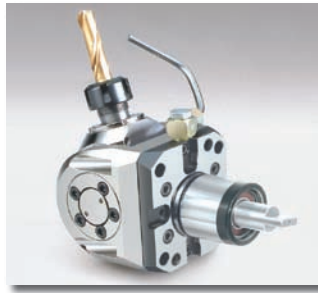
DRIVEN TOOLING
For
Haas SL Lathes



10139 BERGIN RD.
HOWELL, MI 48843
PHONE : 877-91-TOOLS (810-632-4446)
FAX: 877-92-TOOLS (810-632-4467)
EMAIL: info@mdtooling.com
WEBSITE: www.mdtooling.com

March 2009

Live Tooling



Live Tool Technology

M. T. Marchetti, a major live tool manufacture in northern Italy, is a leader in live tool technology. The formula is simple. Use only the best angular contact high-speed bearings available. Add to this exacting tolerances for all ground shafts, gears and bearing pocket features. Next, develop a sealed system that **will not** allow any contamination from chips or coolant.

Top this all off with a superior design and you end up with a live tool that is more rigid, faster and will last longer. **We back this up with a 2-Year factory warranty.**

Our Live Tool Warranty

Our tooling will give years of service in the most demanding applications. The superior design and rugged construction has proven this over the last 12 years. The reliability of our tools allows us to provide a 2-year factory warranty.

MD TOOLING will repair any defective tool holders for a period of 2 years from the date of purchase.

Product Range

We have the largest range of live tooling available for most major machine tool manufactures.

Our available products include an extensive line of standard live tooling as well as specialty toolholders such as 0-90 and 0-180 adjustable angle tool holders, gear hobbers, and even worm gear generators. Our product range includes geared up holders to 60,000 RPM and are engineered for 1,000 PSI coolant through.

We are an industry leader in providing complete tooling solutions with hundreds of static tool options as well.

Technical Support

Here at MD Tooling we have a full technical support department with over 25 years of CNC experience.

Our highly qualified staff can help with part processing, tooling up a job from a blue print and even assist with part programming. Applications Engineers are always available by phone to answer any questions you may have about our tooling or any other CNC related issue.

Stock and Replenishment

MD Tooling maintains an extensive inventory of tooling in our warehouse in Michigan. Our current "fill" rate on orders is 93% from our stock in Michigan for same day shipping.

Should you require a non-stock item, our manufacturer, M.T. Marchetti also maintains a large inventory in Italy. Tooling can be obtained in as little as 3-5 business days.

Shipping

MD Tooling realizes that when you need tooling, often you can't wait until the next day. We process orders and ship from available stock right up until 5PM EST to make certain we get your tooling solutions to you as quickly as possible.

We regularly ship throughout the day via DHL, UPS, FedEx or any other carrier that a customer requests.



10139 Bergin Road

Howell, MI 48843

Phone: 810 632-4446

Fax: 810 632-4467

Email: info@mdtooling.com

Web: www.mdtooling.com

Table of Contents

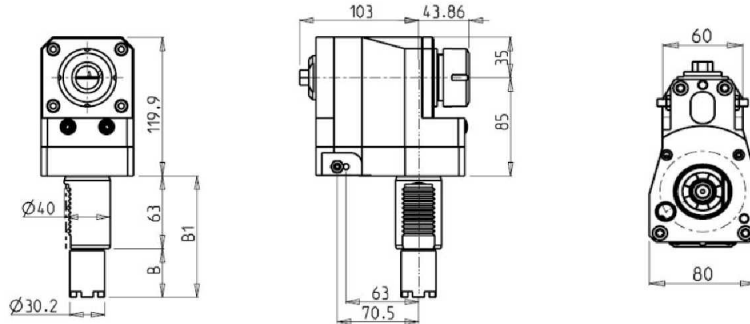
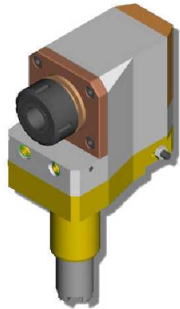
Categorized Listing

SL10/20/30/40 - TL15/25	1
DRIVEN	1
RADIAL REAR-SET DRIVEN TOOL VDI40	1
AXIAL DRIVEN TOOL VDI40	1
AXIAL RE-DIRECTED DRIVEN TOOL VDI40	2
AXIAL GEARED DOWN RE-DIRECTED DRIVEN TOOL VDI40	3
0-90 ADJUSTABLE ANGLE VDI40	4

SL10/20/30/40 - TL15/25

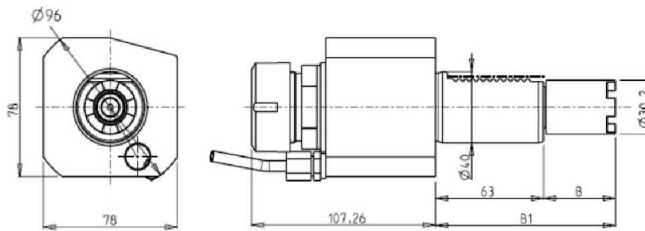
DRIVEN

RADIAL REAR-SET DRIVEN TOOL VDI40



PartNumber	Description	Spindle	I	RPM	Ext Coolant	B	B1	Turret Type
HAS0030232	Redirected ER32 Standard VDI40	ER32	1:1	3800	X	41.85	104.85	VDI STANDARD
HAS0040232	Redirected ER32 HAAS VDI40	ER32	1:1	3800	X	54.55	117.55	HAAS

AXIAL DRIVEN TOOL VDI40

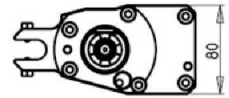
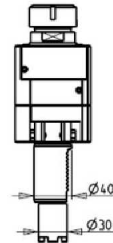
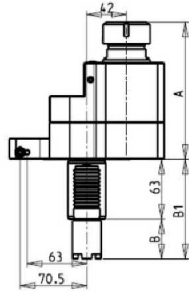
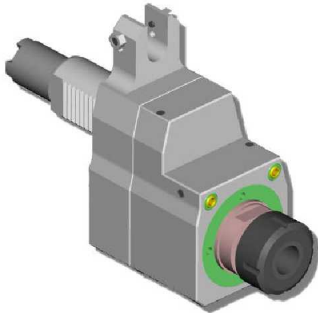


PartNumber	Description	Spindle	I	RPM	Ext Coolant	B	B1	Turret Type
HAS0010232	ER32 Standard VDI40	ER32	1:1	3800	X	41.85	104.85	VDI STANDARD
HAS0020232	ER32 HAAS VDI40	ER32	1:1	3800	X	54.55	117.55	HAAS

SL10/20/30/40 - TL15/25

DRIVEN

AXIAL RE-DIRECTED DRIVEN TOOL VDI40



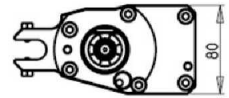
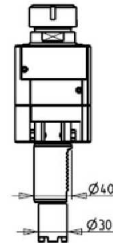
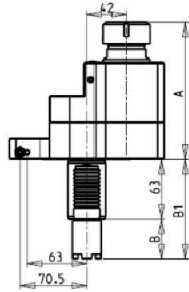
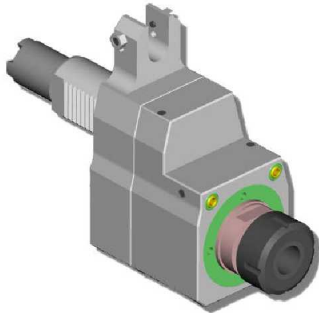
PartNumber	Description	Spindle	I	RPM	Coolant Thru	Ext Coolant	A	B	B1	Turret Type
HAS0070032	Redirected ER32 Standard VDI40	ER32	1:1	3800		X	144.66	41.85	104.85	VDI STANDARD
HAS0080032	Redirected ER32 HAAS VDI40	ER32	1:1	3800		X	144.66	54.55	117.55	HAAS
HAS0071132	Redirected Coolant Through ER32 Standard VDI40 *	ER32	1:1	3800	X		164.96	41.85	104.85	VDI STANDARD
HAS0081132	Redirected Coolant Through ER32 HAAS VDI40 *	ER32	1:1	3800	X		164.96	54.55	117.55	HAAS

* Coolant Through tools are designed for 1000 psi.
They require 5 Micron Filtration and **CANNOT** be run dry.

SL10/20/30/40 - TL15/25

DRIVEN

AXIAL GEARED DOWN RE-DIRECTED DRIVEN TOOL VDI40



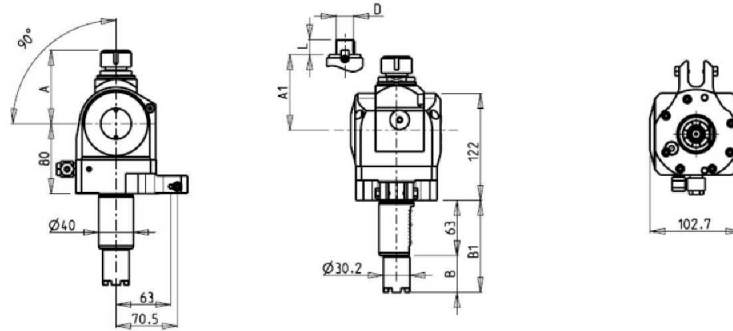
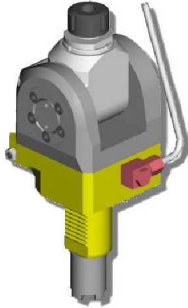
PartNumber	Description	Spindle	I	RPM	Coolant Thru	Ext Coolant	A	B	B1	Turret Type
HAS0072132	Geared Down 1:2 Redirected ER32 Standard VDI40	ER32	2:1	1900		X	144.66	41.85	104.85	VDI STANDARD
HAS0082132	Geared Down 1:2 Redirected ER32 HAAS VDI40	ER32	2:1	1900		X	144.66	54.55	117.55	HAAS
HAS0074232	Geared Down 1:2 Redirected Coolant Through ER32 Standard VDI40 *	ER32	2:1	1900	X		164.96	41.85	104.85	VDI STANDARD
HAS0084232	Geared Down 1:2 Redirected Coolant Through ER32 HAAS VDI40 *	ER32	2:1	1900	X		164.96	54.55	117.55	HAAS

* Coolant Through tools are designed for 1000 psi. They require 5 Micron Filtration and **CANNOT** be run dry.

SL10/20/30/40 - TL15/25

DRIVEN

0-90 ADJUSTABLE ANGLE VDI40



PartNumber	Description	Spindle	I	RPM	Ext Cool	A	A1	B	D	B1	Turret Type	L
HAS0050020	Adjustable Angle (0-90) ER20 Standard VDI40	ER20	1:1	3800	X	84.16	41.85	104.85	VDI STANDARD			
HAS0060020	Adjustable Angle (0-90) ER20 HAAS VDI40	ER20	1:1	3800	X	84.16	54.55	117.55	HAAS			
HAS0050025	Adjustable Angle (0-90) ER25 Standard VDI40	ER25	1:1	3800	X	85.66	41.85	104.85	VDI STANDARD			
HAS0060025	Adjustable Angle (0-90) ER25 HAAS VDI40	ER25	1:1	3800	X	85.66	54.55	117.55	HAAS			
HAS0051617	Adjustable Angle (0-90)Milling Arbor D=16mm, L=17mm Standard VDI40	16x17	1:1	3800	X		65	41.85	16	104.85	VDI STANDARD	17
HAS0061617	Adjustable Angle (0-90)Milling Arbor D=16mm, L=17mm HAAS VDI40	16x17	1:1	3800	X		65	54.55	16	117.55	HAAS	17
HAS0052219	Adjustable Angle (0-90)Milling Arbor D=22mm, L=19mm Standard VDI40	22x19	1:1	3800	X		66	41.85	22	104.85	VDI STANDARD	19
HAS0062219	Adjustable Angle (0-90)Milling Arbor D=22mm, L=19mm HAAS VDI40	22x19	1:1	3800	X		66	54.55	22	117.55	HAAS	19
HAS0051905	Adj. Angle (0-90) Mill Head 3/4x3/4 Standard VDI40	3/4x3/4	1:1	3800	X		65	41.85	3/4"	104.85	VDI STANDARD	3/4"
HAS0061905	Adj. Angle (0-90) Mill Head 3/4x3/4 HAAS VDI40	3/4x3/4	1:1	3800	X		65	54.55	3/4"	117.55	HAAS	3/4"

Note : Wrenches are provided with the purchase of Specialty Toolholders

Table of Contents

Part Number Index

H

HAS0010232	ER32 Standard VDI40	1
HAS0020232	ER32 HAAS VDI40	1
HAS0030232	Redirected ER32 Standard VDI40	1
HAS0040232	Redirected ER32 HAAS VDI40	1
HAS0050020	Adjustable Angle (0-90) ER20 Standard VDI40	4
HAS0050025	Adjustable Angle (0-90) ER25 Standard VDI40	4
HAS0051617	Adjustable Angle (0-90) Milling Arbor D=16mm, L=17mm Standard VDI40	4
HAS0051905	Adj. Angle (0-90) Mill Head 3/4x3/4 Standard VDI40	4
HAS0052219	Adjustable Angle (0-90) Milling Arbor D=22mm, L=19mm Standard VDI40	4
HAS0060020	Adjustable Angle (0-90) ER20 HAAS VDI40	4
HAS0060025	Adjustable Angle (0-90) ER25 HAAS VDI40	4
HAS0061617	Adjustable Angle (0-90) Milling Arbor D=16mm, L=17mm HAAS VDI40	4
HAS0061905	Adj. Angle (0-90) Mill Head 3/4x3/4 HAAS VDI40	4
HAS0062219	Adjustable Angle (0-90) Milling Arbor D=22mm, L=19mm HAAS VDI40	4
HAS0070032	Redirected ER32 Standard VDI40	2
HAS0071132	Redirected Coolant Through ER32 Standard VDI40 *	2
HAS0072132	Geared Down 1:2 Redirected ER32 Standard VDI40	3
HAS0074232	Geared Down 1:2 Redirected Coolant Through ER32 Standard VDI40 *	3
HAS0080032	Redirected ER32 HAAS VDI40	2
HAS0081132	Redirected Coolant Through ER32 HAAS VDI40 *	2
HAS0082132	Geared Down 1:2 Redirected ER32 HAAS VDI40	3
HAS0084232	Geared Down 1:2 Redirected Coolant Through ER32 HAAS VDI40 *	3