

Driven Tool Holders
For



10139 BERGIN RD.
HOWELL, MI 48843
PHONE : 877-91-TOOLS (810-632-4446)
FAX: 877-92-TOOLS (810-632-4467)
EMAIL: info@mdtooling.com
WEBSITE: www.mdtooling.com

Prices Effective July 2009
Catalog Updated July 2009

Live Tooling



Live Tool Technology

M. T. Marchetti, a major live tool manufacture in northern Italy, is a leader in live tool technology. The formula is simple. Use only the best angular contact high-speed bearings available. Add to this exacting tolerances for all ground shafts, gears and bearing pocket features. Next, develop a sealed system that **will not** allow any contamination from chips or coolant.

Top this all off with a superior design and you end up with a live tool that is more rigid, faster and will last longer. **We back this up with a 2-Year factory warranty.**

Our Live Tool Warranty

Our tooling will give years of service in the most demanding applications. The superior design and rugged construction has proven this over the last 12 years. The reliability of our tools allows us to provide a 2-year factory warranty.

MD TOOLING will repair any defective tool holders for a period of 2 years from the date of purchase.

Product Range

We have the largest range of live tooling available for most major machine tool manufactures.

Our available products include an extensive line of standard live tooling as well as specialty toolholders such as 0-90 and 0-180 adjustable angle tool holders, gear hobbers, and even worm gear generators. Our product range includes geared up holders to 60,000 RPM and are engineered for 1,000 PSI coolant through.

We are an industry leader in providing complete tooling solutions with hundreds of static tool options as well.

Technical Support

Here at MD Tooling we have a full technical support department with over 25 years of CNC experience.

Our highly qualified staff can help with part processing, tooling up a job from a blue print and even assist with part programming. Applications Engineers are always available by phone to answer any questions you may have about our tooling or any other CNC related issue.

Stock and Replenishment

MD Tooling maintains an extensive inventory of tooling in our warehouse in Michigan. Our current "fill" rate on orders is 93% from our stock in Michigan for same day shipping.

Should you require a non-stock item, our manufacturer, M.T. Marchetti also maintains a large inventory in Italy. Tooling can be obtained in as little as 3-5 business days.

Shipping

MD Tooling realizes that when you need tooling, often you can't wait until the next day. We process orders and ship from available stock right up until 5PM EST to make certain we get your tooling solutions to you as quickly as possible.

We regularly ship throughout the day via DHL, UPS, FedEx or any other carrier that a customer requests.



10139 Bergin Road

Howell, MI 48843

Phone: 810 632-4446

Fax: 810 632-4467

Email: info@mdtooling.com

Web: www.mdtooling.com

- 2-Year Warranty on all live tools.
- Quality tooling at highly competitive pricing.
- Extensive inventory. We currently ship over 93% of all orders same day.
- Fast, Friendly, Reliable Service!
- More specialty tool holders than any other manufacturer.
- Custom tool holders available.
- All available tooling may not be shown in this catalog. If you can't find the holder you're looking for, please contact this office for assistance.



Table of Contents

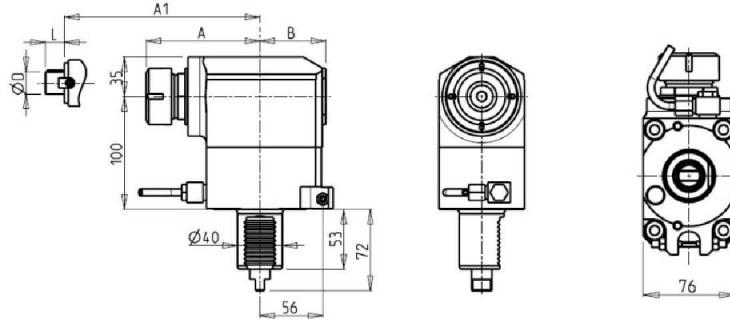
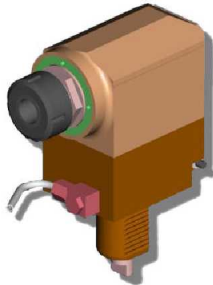
Categorized Listing

VDI40	1
DRIVEN	1
RADIAL DRIVEN TOOL H=100	1
RADIAL REAR-SET DRIVEN TOOL - RH	1
RADIAL REAR-SET DRIVEN TOOL - LH	2
AXIAL DRIVEN TOOL	2
AXIAL RE-DIRECTED DRIVEN TOOL	3
GEARED-DOWN AXIAL RE-DIRECTED DRIVEN TOOL	3
0-90 ADJUSTABLE ANGLE DRIVEN TOOL	4
VDI50	5
DRIVEN	5
RADIAL DRIVEN TOOL - RH	5
RADIAL DRIVEN TOOL - LH	5
RADIAL 4 HEAD DRIVEN TOOL	5
AXIAL DRIVEN TOOL	6
AXIAL RE-DIRECTED DRIVEN TOOL	6
0-90 ADJUSTABLE ANGLE DRIVEN TOOL	7
GEAR HOBBER - RH	7
GEAR HOBBER - LH	8

VDI40

DRIVEN

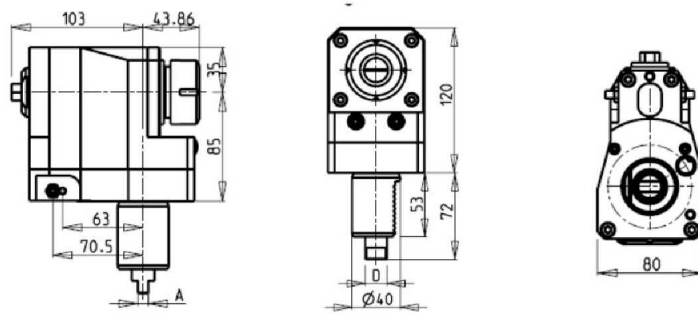
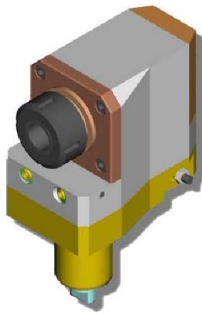
RADIAL DRIVEN TOOL H=100



PartNumber	Description	Orientation	Spindle	I	RPM	Coolant Thru	Ext Coolant	A	A1	B	D	L
DUP0040132	ER32 Standard	Right Hand	ER32	1:1	4000		X	101.1		58.5		
DUP0040232	ER32 Coolant Through *	Right Hand	ER32	1:1	4000	X	X	101.1		82		
DUP0042219	Milling Head D=22mm, L=19mm	Right Hand	22x19	1:1	4000		X		78.5	58.5	22	19
DUP0042721	Milling Head D=27mm, L=21mm	Right Hand	27x21	1:1	4000		X		78.5	58.5	27	21

* Coolant Through tools are designed for 1000 psi.
They require 5 Micron Filtration and **CANNOT** be run dry.

RADIAL REAR-SET DRIVEN TOOL - RH

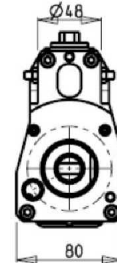
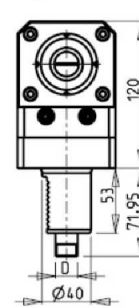
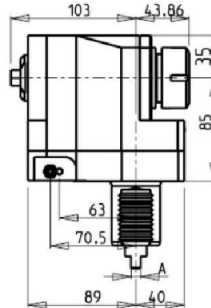
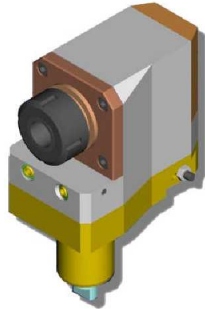


PartNumber	Description	Orientation	Spindle	I	RPM	Ext Coolant	Turret	A	D
141DUP_R32_40A00	Rear-Set ER32 Standard	Right Hand	ER32	1:1	4000	X	Diplomatic	8	18
141DUP_R32_40A01	Rear-Set ER32 Standard	Right Hand	ER32	1:1	4000	X	Diplomatic Comev	6	12

VDI40

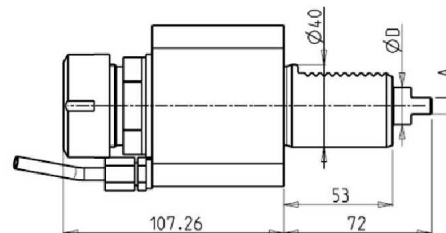
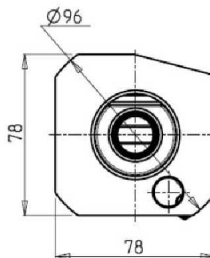
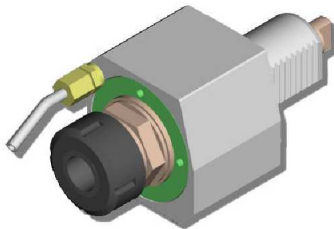
DRIVEN

RADIAL REAR-SET DRIVEN TOOL - LH



PartNumber	Description	Orientation	Spindle	I	RPM	Ext Coolant	Turret	A	D
141DUP_R32_40A20	Rear-Set ER32 Standard	Left Hand	ER32	1:1	4000	X	Diplomatic	8	18
141DUP_R32_40A21	Rear-Set ER32 Standard	Left Hand	ER32	1:1	4000	X	Diplomatic Comev	6	12

AXIAL DRIVEN TOOL



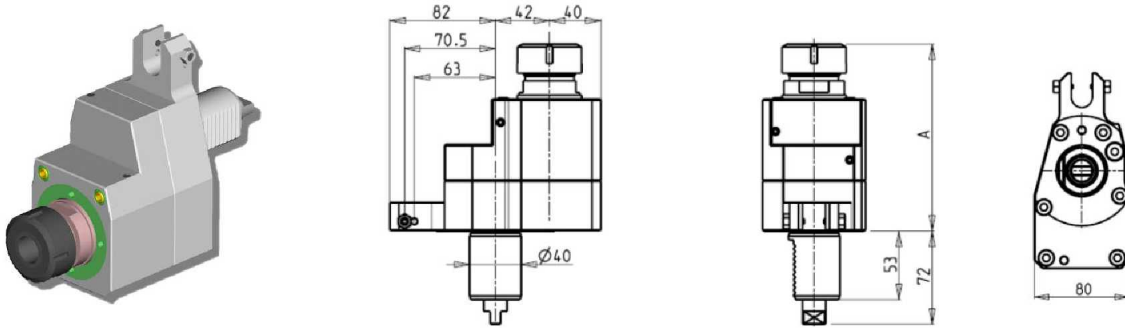
PartNumber	Description	Spindle	I	RPM	Coolant Thru	Ext Coolant	Turret	A	D
142DUP_A32_40A00	ER32 Standard	ER32	1:1	4000		X	Diplomatic	8	18
142DUP_A32_40A10	ER32 Coolant Through *	ER32	1:1	4000	X	X	Diplomatic	8	18
142DUP_A32_40A01	ER32 Standard	ER32	1:1	4000		X	Diplomatic Comev	6	12

* Coolant Through tools are designed for 1000 psi.
They require 5 Micron Filtration and **CANNOT** be run dry.

VDI40

DRIVEN

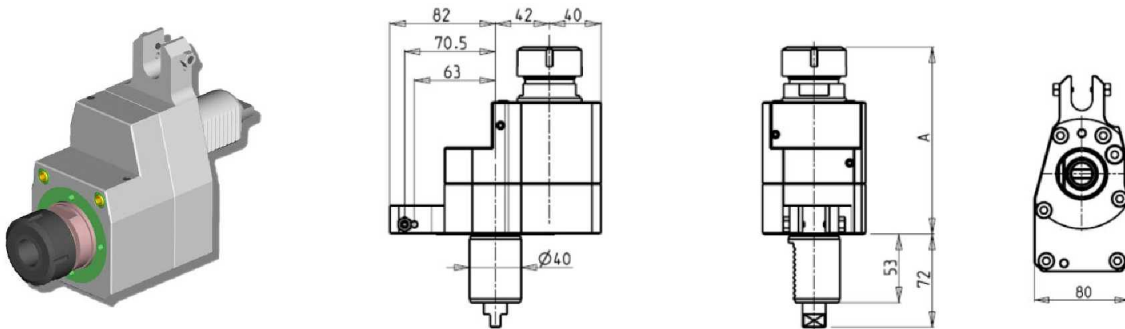
AXIAL RE-DIRECTED DRIVEN TOOL



PartNumber	Description	Orientation	Spindle	I	RPM	Coolant Thru	Ext Coolant	A
145DUP_A32_40A00	Re-directed ER32 Standard	Right Hand	ER32	1:1	4000		X	144.46
145DUP_A32_40A10	Re-directed ER32 Coolant Through *	Right Hand	ER32	1:1	4000	X		164.96

* Coolant Through tools are designed for 1000 psi.
They require 5 Micron Filtration and **CANNOT** be run dry.

GEARED-DOWN AXIAL RE-DIRECTED DRIVEN TOOL



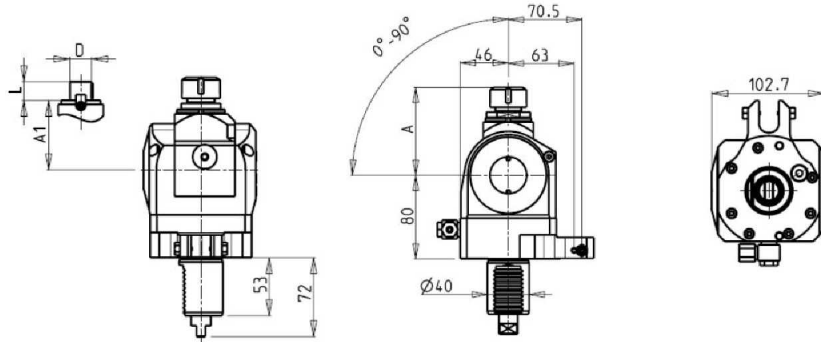
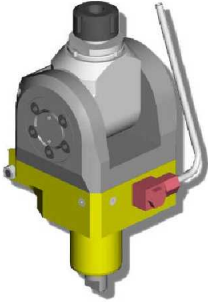
PartNumber	Description	Orientation	Spindle	I	RPM	Coolant Thru	Ext Coolant	A
145DUP_A32_40A20	ER32 Standard	Right Hand	ER32	2:1	2000		X	144.46
145DUP_A32_40A30	ER32 Coolant Through *	Right Hand	ER32	2:1	2000	X		164.96

* Coolant Through tools are designed for 1000 psi.
They require 5 Micron Filtration and **CANNOT** be run dry.

VDI40

DRIVEN

0-90 ADJUSTABLE ANGLE DRIVEN TOOL



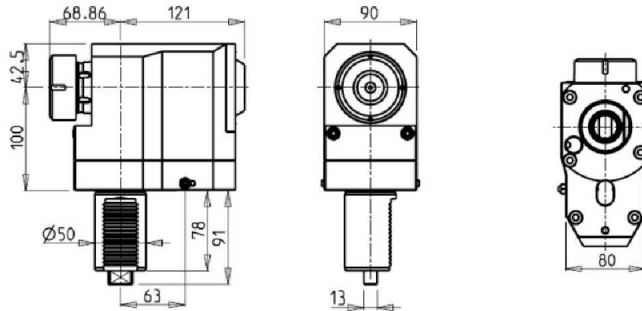
PartNumber	Description	Orientation	Spindle	I	RPM	Ext Coolant	A	A1	D	L
0210020_DUP	Adjustable Angle (0-90) ER20 Standard	Right Hand	ER20	1:1	4000	X	84.16			
0210025_DUP	Adjustable Angle (0-90) ER25 Standard	Right Hand	ER25	1:1	4000	X	85.66			
0211617_DUP	Adjustable Angle (0-90) Milling Head D=16mm, L=17mm	Right Hand	16x17	1:1	4000	X		65	16	17
0212219_DUP	Adjustable Angle (0-90) Milling Head D=22mm, L=19mm	Right Hand	22x19	1:1	4000	X		66	22	19
0211905_DUP	Adjustable Angle (0-90) Milling Head D=3/4", L=3/4"	Right Hand	3/4x3/4	1:1	4000	X		65	3/4"	3/4"

Note : Wrenches are provided with the purchase of Specialty Toolholders

VDI50

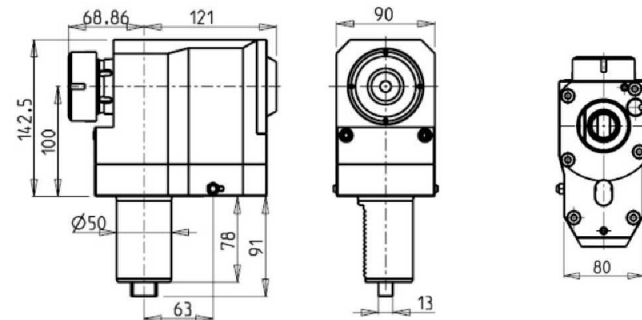
DRIVEN

RADIAL DRIVEN TOOL - RH



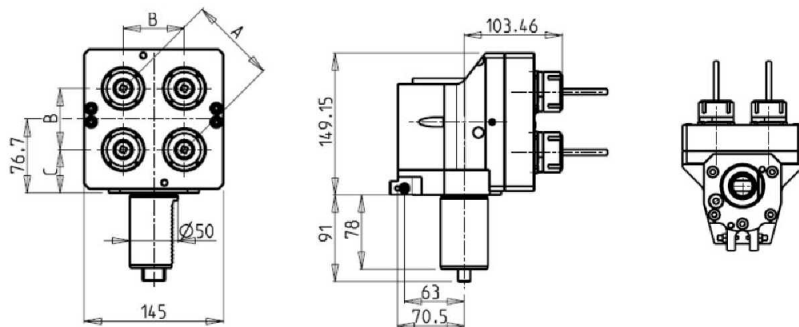
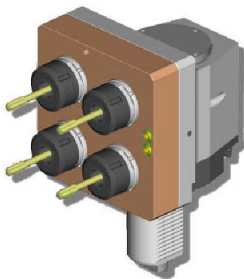
PartNumber	Description	Orientation	Spindle	I	RPM	Ext Coolant
151DUP_R40_50A00	ER40 Standard	Right Hand	ER40	1:1	4000	X

RADIAL DRIVEN TOOL - LH



PartNumber	Description	Orientation	Spindle	I	RPM	Ext Coolant
151DUP_R40_50A20	ER40 Standard	Left Hand	ER40	1:1	4000	X

RADIAL 4 HEAD DRIVEN TOOL

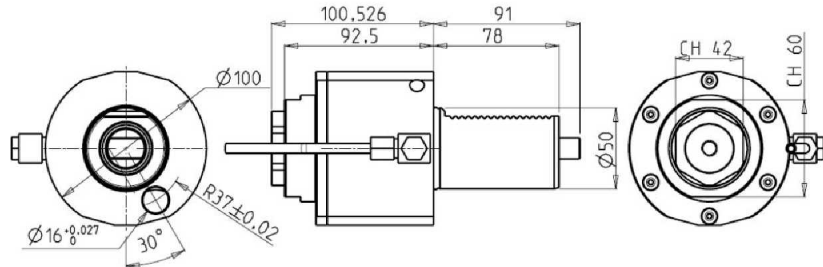
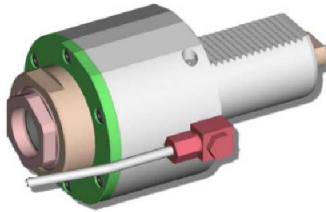


PartNumber	Description	Orientation	Number of Tools	Spindle	I	RPM	Ext Coolant	A	B	C
0240025X4_90	ER25 Standard	Right Hand	4	ER25	2:1	2000	X	90	63.64	44.88
0240025X4_105	ER25 Standard	Right Hand	4	ER25	2:1	2000	X	105	74.246	39.577

VDI50

DRIVEN

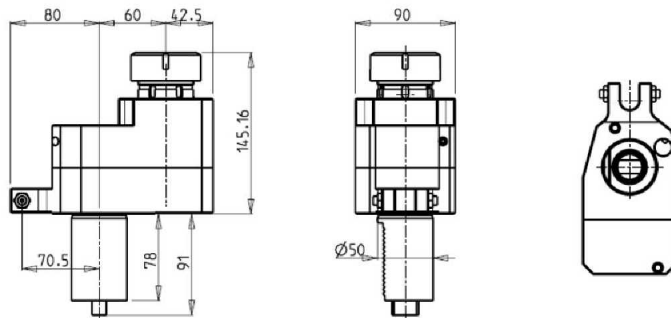
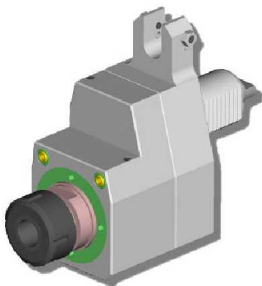
AXIAL DRIVEN TOOL



PartNumber	Description	Spindle	I	RPM	Coolant Thru	Ext Coolant
DUP0020140	ER40A Standard	ER40A	1:1	4000		X
DUP0020240	ER40A Coolant Through *	ER40A	1:1	4000	X	X

* Coolant Through tools are designed for 1000 psi.
They require 5 Micron Filtration and **CANNOT** be run dry.

AXIAL RE-DIRECTED DRIVEN TOOL

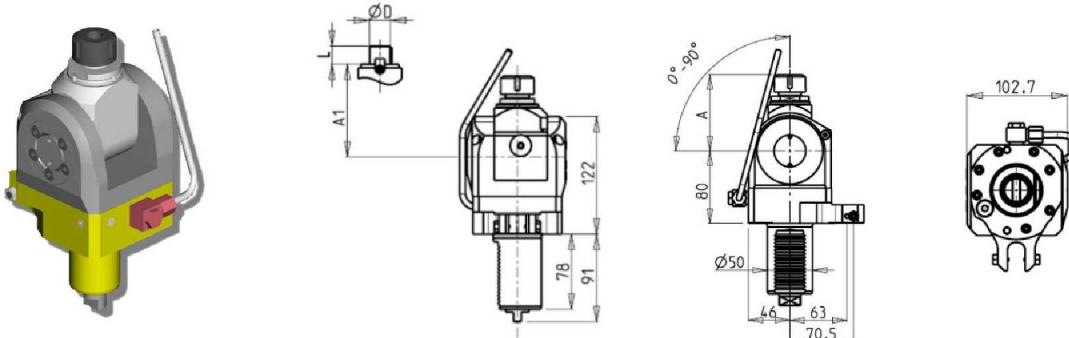


PartNumber	Description	Orientation	Spindle	I	RPM	Ext Coolant
155DUP_A40_50A00	Re-directed ER40 Standard	Right Hand	ER40	1:1	4000	X

VDI50

DRIVEN

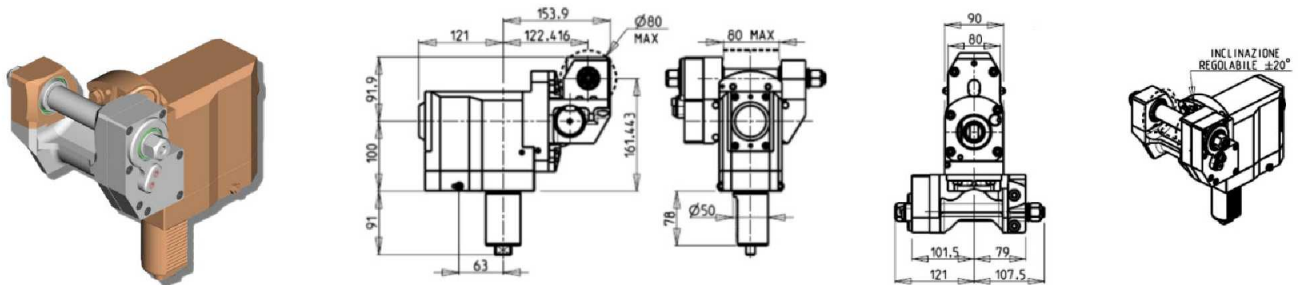
0-90 ADJUSTABLE ANGLE DRIVEN TOOL



PartNumber	Description	Orientation	Spindle	I	RPM	Ext Coolant	A	A1	D	L
DUP0010120	Adjustable Angle (0-90) ER20 Standard	Right Hand	ER20	1:1	4000	X	84.16			
DUP0010125	Adjustable Angle (0-90) ER25 Standard	Right Hand	ER25	1:1	4000	X	85.66			
DUP0011617	Adjustable Angle (0-90) Milling Head D=16mm, L=17mm	Right Hand	16x17	1:1	4000	X		65	16	17
DUP0012219	Adjustable Angle (0-90) Milling Head D=22mm, L=19mm	Right Hand	22x19	1:1	4000	X		66	22	19
DUP0011905	Adjustable Angle (0-90) Milling Head D=3/4", L=3/4"	Right Hand	3/4x3/4	1:1	4000	X		65	3/4"	3/4"

Note : Wrenches are provided with the purchase of Specialty Toolholders

GEAR HOBBER - RH



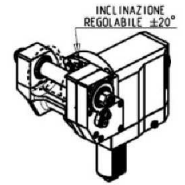
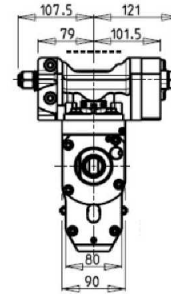
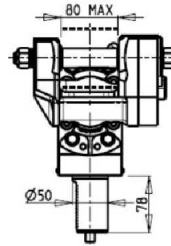
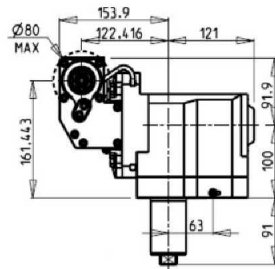
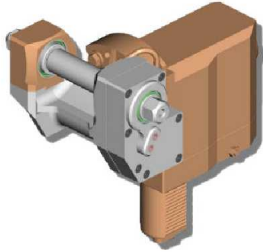
PartNumber	Description	Orientation	I	RPM	Ext Coolant	D Inch	D mm
156DUP_PCR_50A00	Gear Hobber	Right Hand	1:1	4000	X	3/4 - 1 - 1 1/4	16-22-27-32
156DUP_PCR_50A01	Gear Hobber - Geared Down	Right Hand	2:1	2000	X	3/4 - 1 - 1 1/4	16-22-27-32

Note : Wrenches are provided with the purchase of Specialty Toolholders

VDI50

DRIVEN

GEAR HOBBER - LH



PartNumber	Description	Orientation	I	RPM	Ext Coolant	D Inch	D mm
156DUP_PCR_50A10	Gear Hobber	Left Hand	1:1	4000	X	3/4 - 1 - 1 1/4	16-22-27-32
156DUP_PCR_50A11	Gear Hobber - Geared Down	Left Hand	2:1	2000	X	3/4 - 1 - 1 1/4	16-22-27-32

Note : Wrenches are provided with the purchase of Specialty Toolholders

Table of Contents

Part Number Index

0

0210020_DUP	Adjustable Angle (0-90) ER20 Standard	4
0210025_DUP	Adjustable Angle (0-90) ER25 Standard	4
0211617_DUP	Adjustable Angle (0-90) Milling Head D=16mm, L=17mm	4
0211905_DUP	Adjustable Angle (0-90) Milling Head D=3/4", L=3/4"	4
0212219_DUP	Adjustable Angle (0-90) Milling Head D=22mm, L=19mm	4
0240025X4_105	ER25 Standard	5
0240025X4_90	ER25 Standard	5

1

141DUP_R32_40A00	Rear-Set ER32 Standard	1
141DUP_R32_40A01	Rear-Set ER32 Standard	1
141DUP_R32_40A20	Rear-Set ER32 Standard	2
141DUP_R32_40A21	Rear-Set ER32 Standard	2
142DUP_A32_40A00	ER32 Standard	2
142DUP_A32_40A01	ER32 Standard	2
142DUP_A32_40A10	ER32 Coolant Through *	2
145DUP_A32_40A00	Re-directed ER32 Standard	3
145DUP_A32_40A10	Re-directed ER32 Coolant Through *	3
145DUP_A32_40A20	ER32 Standard	3
145DUP_A32_40A30	ER32 Coolant Through *	3
151DUP_R40_50A00	ER40 Standard	5
151DUP_R40_50A20	ER40 Standard	5
155DUP_A40_50A00	Re-directed ER40 Standard	6
156DUP_PCR_50A00	Gear Hobber	7
156DUP_PCR_50A01	Gear Hobber - Geared Down	7
156DUP_PCR_50A10	Gear Hobber	8
156DUP_PCR_50A11	Gear Hobber - Geared Down	8

D

DUP0010120	Adjustable Angle (0-90) ER20 Standard	7
DUP0010125	Adjustable Angle (0-90) ER25 Standard	7
DUP0011617	Adjustable Angle (0-90) Milling Head D=16mm, L=17mm	7
DUP0011905	Adjustable Angle (0-90) Milling Head D=3/4", L=3/4"	7
DUP0012219	Adjustable Angle (0-90) Milling Head D=22mm, L=19mm	7
DUP0020140	ER40A Standard	6
DUP0020240	ER40A Coolant Through *	6
DUP0040132	ER32 Standard	1
DUP0040232	ER32 Coolant Through *	1
DUP0042219	Milling Head D=22mm, L=19mm	1
DUP0042721	Milling Head D=27mm, L=21mm	1