

Driven Tool Holders  
For



BARUFFALDI Turrets



10139 BERGIN RD.  
HOWELL, MI 48843  
PHONE : 877-91-TOOLS ( 810-632-4446 )  
FAX: 877-92-TOOLS ( 810-632-4467 )  
EMAIL: [info@mdtooling.com](mailto:info@mdtooling.com)  
WEBSITE: [www.mdtooling.com](http://www.mdtooling.com)

Prices Effective July 2009  
Catalog Updated July 2009

# Live Tooling



## Live Tool Technology

M. T. Marchetti, a major live tool manufacture in northern Italy, is a leader in live tool technology. The formula is simple. Use only the best angular contact high-speed bearings available. Add to this exacting tolerances for all ground shafts, gears and bearing pocket features. Next, develop a sealed system that **will not** allow any contamination from chips or coolant.

Top this all off with a superior design and you end up with a live tool that is more rigid, faster and will last longer. **We back this up with a 2-Year factory warranty.**

## Our Live Tool Warranty

Our tooling will give years of service in the most demanding applications. The superior design and rugged construction has proven this over the last 12 years. The reliability of our tools allows us to provide a 2-year factory warranty.

MD TOOLING will repair any defective tool holders for a period of 2 years from the date of purchase.

## Product Range

We have the largest range of live tooling available for most major machine tool manufactures.

Our available products include an extensive line of standard live tooling as well as specialty toolholders such as 0-90 and 0-180 adjustable angle tool holders, gear hobbers, and even worm gear generators. Our product range includes geared up holders to 60,000 RPM and are engineered for 1,000 PSI coolant through.

We are an industry leader in providing complete tooling solutions with hundreds of static tool options as well.

## Technical Support

Here at MD Tooling we have a full technical support department with over 25 years of CNC experience.

Our highly qualified staff can help with part processing, tooling up a job from a blue print and even assist with part programming. Applications Engineers are always available by phone to answer any questions you may have about our tooling or any other CNC related issue.

## Stock and Replenishment

MD Tooling maintains an extensive inventory of tooling in our warehouse in Michigan. Our current "fill" rate on orders is 93% from our stock in Michigan for same day shipping.

Should you require a non-stock item, our manufacturer, M.T. Marchetti also maintains a large inventory in Italy. Tooling can be obtained in as little as 3-5 business days.

## Shipping

MD Tooling realizes that when you need tooling, often you can't wait until the next day. We process orders and ship from available stock right up until 5PM EST to make certain we get your tooling solutions to you as quickly as possible.

We regularly ship throughout the day via DHL, UPS, FedEx or any other carrier that a customer requests.



10139 Bergin Road

Howell, MI 48843

**Phone:** 810 632-4446

**Fax:** 810 632-4467

**Email:** [info@mdtooling.com](mailto:info@mdtooling.com)

**Web:** [www.mdtooling.com](http://www.mdtooling.com)

- 2-Year Warranty on all live tools.
- Quality tooling at highly competitive pricing.
- Extensive inventory. We currently ship over 93% of all orders same day.
- Fast, Friendly, Reliable Service!
- More specialty tool holders than any other manufacturer.
- Custom tool holders available.
- All available tooling may not be shown in this catalog. If you can't find the holder you're looking for, please contact this office for assistance.



# Table of Contents

## Categorized Listing

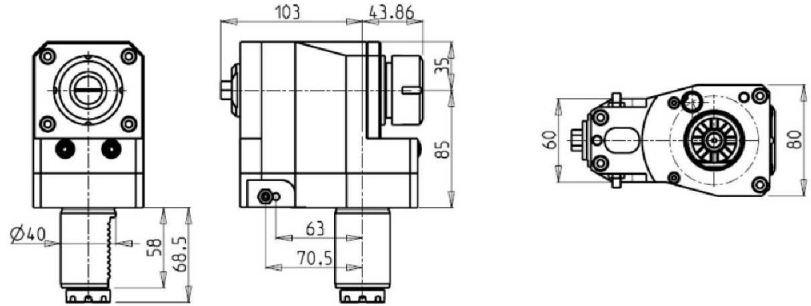
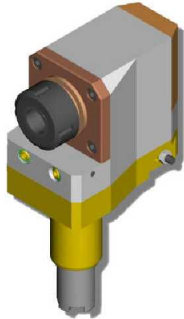
<b>VDI40</b>	<b>1</b>
<b>DRIVEN</b>	<b>1</b>
RADIAL REAR-SET DRIVEN TOOL - RH	1
RADIAL REAR-SET DRIVEN TOOL - LH	1
AXIAL DRIVEN TOOL	1
AXIAL RE-DIRECTED DRIVEN TOOL	2
GEARED-DOWN AXIAL RE-DIRECTED DRIVEN TOOL	2
0-90 ADJUSTABLE ANGLE DRIVEN TOOL	3
<b>VDI50</b>	<b>4</b>
<b>DRIVEN</b>	<b>4</b>
RADIAL DRIVEN TOOL	4
RADIAL DRIVEN TOOL FOR INTERNAL TOOLING	4
AXIAL DRIVEN TOOL	4
AXIAL RE-DIRECTED DRIVEN TOOL	5

---

# VDI40

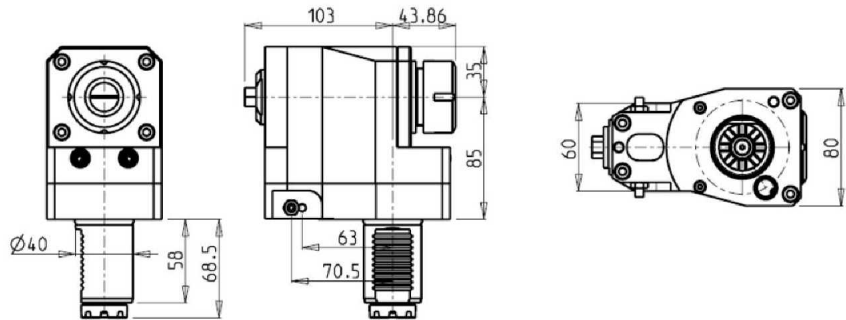
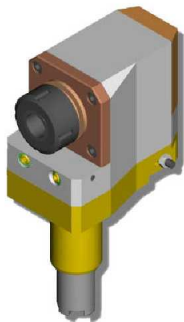
## DRIVEN

### RADIAL REAR-SET DRIVEN TOOL - RH



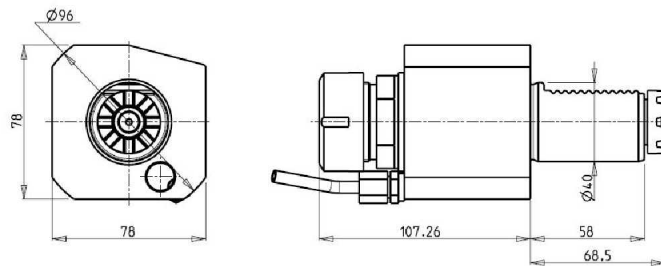
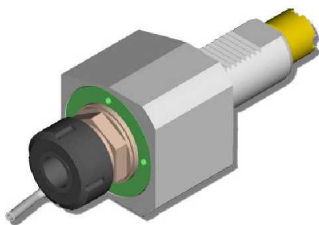
PartNumber	Description	Orientation	Spindle	I	RPM	Ext Coolant
161BAR_R32_40C00	ER32 Standard	Right Hand	ER32	1:1	4000	X

### RADIAL REAR-SET DRIVEN TOOL - LH



PartNumber	Description	Orientation	Spindle	I	RPM	Ext Coolant
161BAR_R32_40C20	ER32 Standard	Left Hand	ER32	1:1	4000	X

### AXIAL DRIVEN TOOL

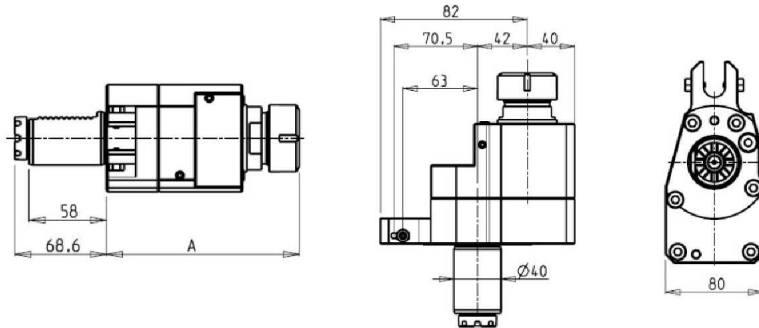


PartNumber	Description	Spindle	I	RPM	Ext Coolant
162BAR_A32_40C00	ER32 Standard	ER32	1:1	4000	X

# VDI40

## DRIVEN

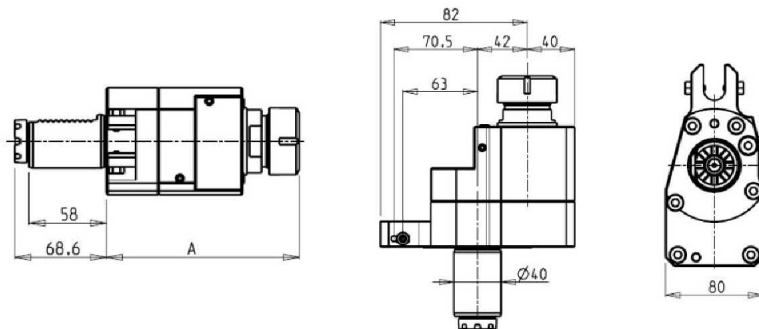
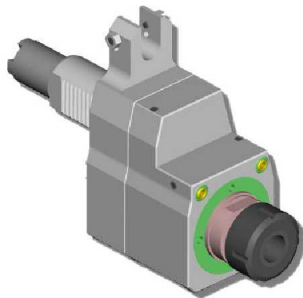
### AXIAL RE-DIRECTED DRIVEN TOOL



PartNumber	Description	Orientation	Spindle	I	RPM	Coolant Thru	Ext Coolant	A
165BAR_A32_40C00	ER32 Standard	Right Hand	ER32	1:1	4000		X	144.46
165BAR_A32_40C10	ER32 Coolant Through *	Right Hand	ER32	1:1	4000	X		164.96

\* Coolant Through tools are designed for 1000 psi.  
They require 5 Micron Filtration and **CANNOT** be run dry.

### GEARED-DOWN AXIAL RE-DIRECTED DRIVEN TOOL



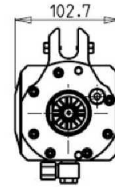
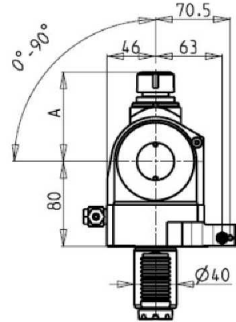
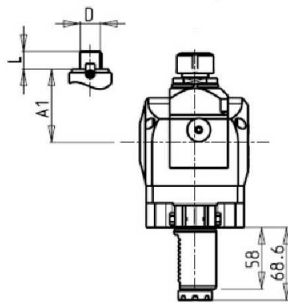
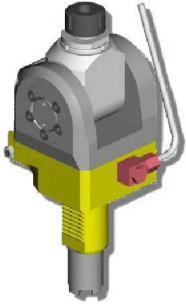
PartNumber	Description	Orientation	Spindle	I	RPM	Coolant Thru	Ext Coolant	A
165BAR_A32_40C20	ER32 Standard	Right Hand	ER32	2:1	2000		X	144.46
165BAR_A32_40C30	ER32 Coolant Through *	Right Hand	ER32	2:1	2000	X		164.96

\* Coolant Through tools are designed for 1000 psi.  
They require 5 Micron Filtration and **CANNOT** be run dry.

# VDI40

## DRIVEN

### 0-90 ADJUSTABLE ANGLE DRIVEN TOOL



PartNumber	Description	Orientation	Spindle	I	RPM	Ext Coolant	A	A1	D	L
0210020_BAR	ER20 Standard	Right Hand	ER20	1:1	4000	X	84.16			
0210025_BAR	ER25 Standard	Right Hand	ER25	1:1	4000	X	85.66			
0211617_BAR	Milling Head D=16mm L=17mm	Right Hand	16x17	1:1	4000	X		65	16	17
0212219_BAR	Milling Head D=22mm L=19mm	Right Hand	22x19	1:1	4000	X		66	22	19
0211905_BAR	Milling Head D=3/4" L=3/4"	Right Hand	3/4"x3/4"	1:1	4000	X		65	3/4"	3/4"

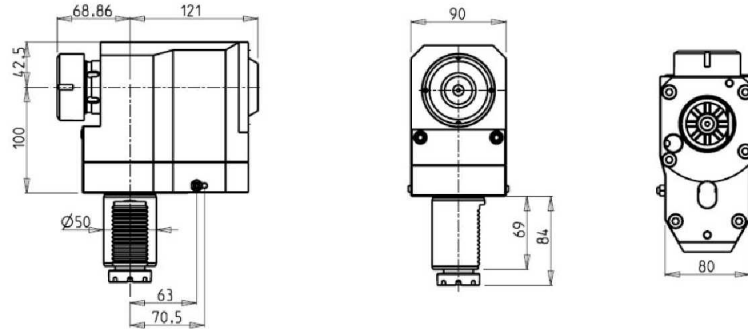
**Note :**

Wrenches are provided with the purchase of Specialty Toolholders

# VDI50

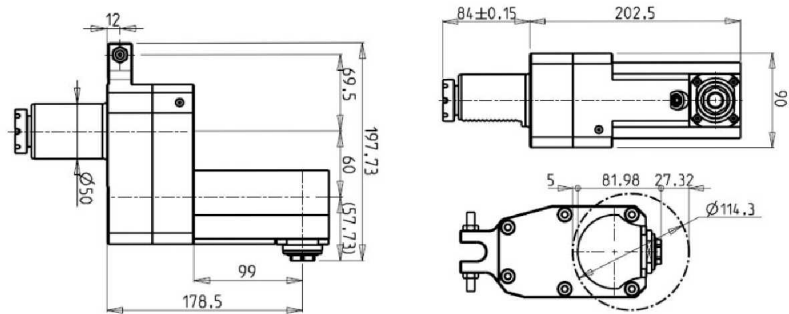
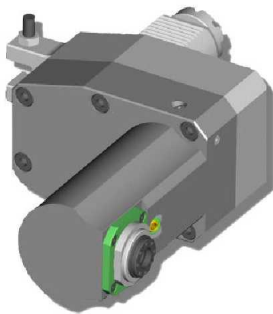
## DRIVEN

### RADIAL DRIVEN TOOL



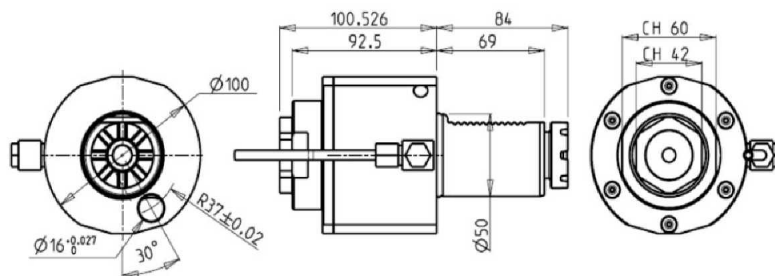
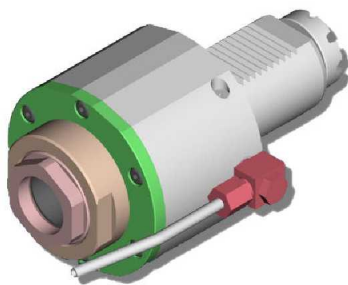
PartNumber	Description	Orientation	Spindle	I	RPM	Ext Coolant
181BAR_R40_50C00	ER40 Standard	Right Hand	ER40	1:1	4000	X

### RADIAL DRIVEN TOOL FOR INTERNAL TOOLING



PartNumber	Description	Orientation	Spindle	I	RPM	Ext Coolant
BAR0010120	ER20A Standard	Right Hand	ER20A	1:1	4000	X

### AXIAL DRIVEN TOOL



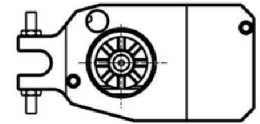
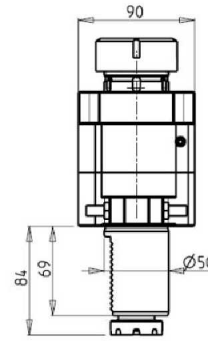
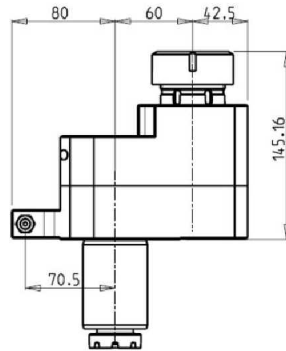
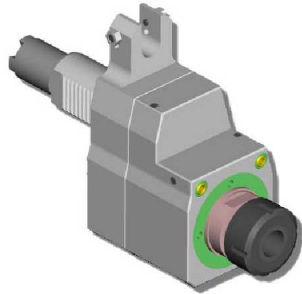
PartNumber	Description	Spindle	I	RPM	Coolant Thru	Ext Coolant
BAR0020140	ER40A Standard	ER40A	1:1	4000		X
BAR0020240	ER40A Coolant Through *	ER40A	1:1	4000	X	X

\* Coolant Through tools are designed for 1000 psi.  
They require 5 Micron Filtration and **CANNOT** be run dry.

# VDI50

DRIVEN

## AXIAL RE-DIRECTED DRIVEN TOOL



PartNumber	Description	Orientation	Spindle	I	RPM	Ext Coolant
185BAR_A4_50C00	ER40 Standard	Right Hand	ER40	1:1	4000	X

# Table of Contents

## Part Number Index

### 0

0210020_BAR	ER20 Standard	3
0210025_BAR	ER25 Standard	3
0211617_BAR	Milling Head D=16mm L=17mm	3
0211905_BAR	Milling Head D=3/4" L=3/4"	3
0212219_BAR	Milling Head D=22mm L=19mm	3

### 1

161BAR_R32_40C00	ER32 Standard	1
161BAR_R32_40C20	ER32 Standard	1
162BAR_A32_40C00	ER32 Standard	1
165BAR_A32_40C00	ER32 Standard	2
165BAR_A32_40C10	ER32 Coolant Through *	2
165BAR_A32_40C20	ER32 Standard	2
165BAR_A32_40C30	ER32 Coolant Through *	2
181BAR_R40_50C00	ER40 Standard	4
185BAR_A4_50C00	ER40 Standard	5

### B

BAR0010120	ER20A Standard	4
BAR0020140	ER40A Standard	4
BAR0020240	ER40A Coolant Through *	4